

16 SAMPLE LETTER SEARCH MAZES

WITH INSTRUCTIONS AND SOLUTIONS

MK EIDSON

Eposic

COPYRIGHT, LICENSING, REQUESTS, AND CONTACT INFO

Copyright ©2021 Eposic. All Rights Reserved. See below regarding licensing.

This booklet is available in digital format only.

Text, Interior Diagrams, and Programming by MK Eidson
Publisher: Eposic, Windermere, Florida, USA

More information about this booklet and its companion volume, *128 Letter Search Mazes for Perceptive Puzzlers*, may be found at:

<https://eposic.com/pub/letter-search-mazes>

Thank you for your support of Eposic. It's our goal to bring you products that aren't only entertaining, but thought-provoking. Please visit our web site at <https://eposic.com> to learn more about our full line of products, including game and puzzle books, GameLit fiction, and electronic music.

Constructive criticism, corrections, and questions may be emailed directly to the publisher at mike@eposic.org. It will help to mention the specific book title in the subject line of your email.

Please email the publisher at mike@eposic.org with any syndication or customized puzzle generation requests.

License: Permission is granted to make physical copies of the puzzles in *this specific booklet* for *personal use* or *non-commercial educational use in the classroom*. Permission is also granted to distribute *verbatim digital copies of this specific booklet* to anyone who expresses a desire to obtain a copy. This license is granted to anyone who comes into possession of the *digital form of this specific document* by any means. Questions concerning this licensing and requests for special licensing may be emailed to the publisher at mike@eposic.org.

Considerable effort has gone into ensuring no horizontal, vertical, or diagonal strings of letters in any of the puzzles in this booklet form words known to be of an offensive nature. It's possible we're missing something from our list of offensive words. If any word of an offensive nature pops out at you from any of the puzzles in this book, please accept our apologies and feel free to inform us of your finding by emailing the publisher at mike@eposic.org, so that inclusion of the word can be avoided in future volumes.

Eposic is proud to introduce *16 Sample Letter Search Mazes*, a companion volume to *128 Letter Search Mazes for Perceptive Puzzlers*, available now on Amazon. Check our web site at <https://eposic.com/pub/> for the latest info on our publications. We also have products listed near the end of this sampler.

Our search mazes are constructed of symbols (letters, numbers, etc.) in a grid, where you trace out an unbroken solution path connecting a series of grid cells according to some set of rules. In this booklet of letter search mazes and in its companion volume, the goal is to start at either of two highlighted letters and draw a solution path through a series of cells ending at the other highlighted letter while adhering to the three rules stated below.

If you're familiar with our previously published puzzle book, *200 Number Search Mazes*, note that rule two is different for this book than for that book. This difference is by design, as the goal was to make this latest set of puzzles a more difficult challenge than the previous one. The rules for *this* book and its companion volume are as follows:

Rule One, from any given cell on the solution path, you can only move to an adjacent cell, whether horizontally, vertically, or diagonally.

Rule Two, from any given cell on the solution path, you may only move to a cell containing a letter within two letters alphabetically of the current letter. (Examples: If the current letter is K, you can only move to I, J, K, L, or M. If the current letter is A, you can only move to A, B, or C. If the current letter is Y, you can only move to W, X, Y, or Z.)

Rule Three, the solution path may not revisit any cell.

Note that these rules don't prevent the solution path from crossing itself, which is possible on the diagonal. Also note that these puzzles may use any of the letters from A to Z, giving a broader range of options in creating search maze puzzles than do the numbers 1 to 9. The puzzles in this booklet and the companion volume use a smaller font than was used in the *Number Search Mazes* book, but this allowed us to create puzzle grids with more rows and columns than in the *Numbers* book. All of the solution paths for puzzles in this booklet are more than 150 cells long. The longest is over 200 cells. A few puzzles in the companion volume exceed 300 cells in length and one is just over 500.

Look for an upcoming book of *MEGA number* mazes where no path is shorter than 500 cells. That book uses a 7-pt font. Get your magnifying glass ready.

Admittedly, the length of a solution path doesn't necessarily dictate the degree of difficulty of the puzzle. A shorter solution path can often offer more opportunities for wrong turns that take you further away from the solution.

The software used to create these puzzles was improved immensely over the course of creating this booklet and its companion volume. One of our main goals continues to be making puzzles that are challenging but far from impossible. In the back of the booklet, we show a full page solution for each of

these 16 sample puzzles. Our solutions are included to prove there is at least one solution for each puzzle, and we believe the solutions we provide are unique. However, it's possible you might find other solutions, and it's great if you do, but please double check that any different solution you find follows all three of the rules specific to *this book*. The same can be said if you're having particular difficulty solving one of this book's puzzles.

It can't be emphasized enough that the rules for solving our search maze puzzles may vary from one puzzle book to the next. As of this writing, we have two other search maze puzzle books available, one based on phrases and one using numbers. We're planning on publishing many more search maze puzzle books. Please, please, please make sure you're following the rules for the specific book in hand when trying to solve its puzzles.

If you're confident about how to tackle this book's puzzles, by all means skip ahead and start solving. For those who would appreciate some examples specific to this book, continue reading.

Below is a 3x3 grid filled with 9 distinct letters, two of them highlighted. The goal is to draw a path from one highlighted letter to the other, and it doesn't

A	B	F
H	D	G
K	I	C

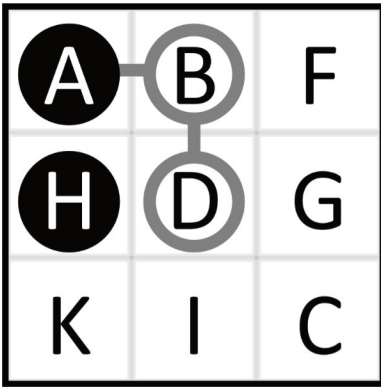
matter at which of the two highlighted letters you start. In drawing the solution path, you're to follow the three rules for this book. As a refresher, the first rule says we can move only to an adjacent cell, the second rule says we can only move to a cell containing a letter that's alphabetically within two letters of the letter where we currently are, and the third rule says we can't revisit a cell we've already been to. Backtracking from a dead-end path is fine, and just as good as starting over.

In solving this example puzzle, we can start at either the highlighted A in the upper left corner or the highlighted H directly below it. Let's start at the A. Rule one tells us we can move from there to an adjacent cell, which would be the B, D, or H. Rule two says we need to move to a cell containing a letter that's alphabetically within two letters of A. So we need to move to a cell containing an A, B, or C. Any other letter would be more than two letters away from A alphabetically-speaking.

Taken together, the rules dictate a single choice of where to move from the A, and that's to the B. The move is depicted in the following grid. We've circled the B to help it stand out as belonging to the solution path. The solutions in the back of the book will show each letter in the solution circled. When you solve these puzzles, it's up to you how you mark the solution path, or whether you mark it at all. As we step through the solution, an uncircled letter will be referred to as *open*. Rule three allows moving to it.

To move on from the B, our rules dictate that we must move to an adjacent open cell containing one of the letters A, B, C, or D. Only one open cell adjacent to B contains one of those letters. Our only move is to the D in the center.

A	B	F
H	D	G
K	I	C

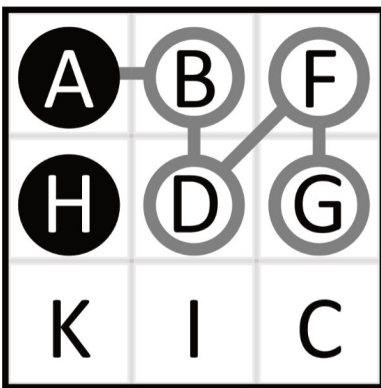
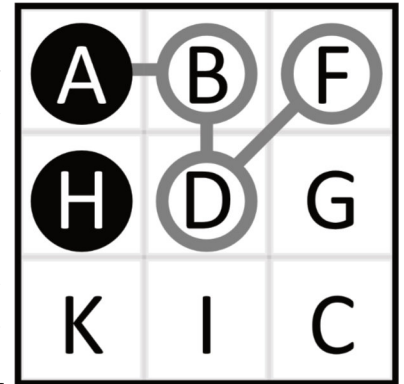


The grid to the left shows the solution path after moving from the B to the D. We now need to find a cell to move to from the D. All cells are adjacent to the center one, so rule one doesn't eliminate any cells. The letters of the alphabet within two letters of D are B, C, D, E, and F. That narrows our choices down to two cells that we haven't already been to. Our way forward will be either to the F in the upper right corner or the C in the lower right corner.

Having more than one choice means taking a gamble on one of them. We can reduce the risk of going down the

wrong path by looking ahead to see if one of our options is an immediate dead end. In this case, the C would be a dead end, because it isn't adjacent to any open cells with letters in the range A to E. The F, on the other hand, is adjacent to an open G, which will allow further progress. So we'll move from the D to the F, as shown to the right.

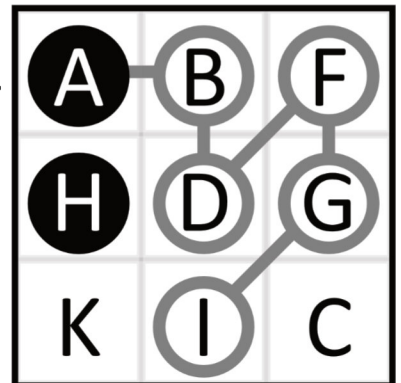
The move from D to F takes us in a direction away from our intended goal. This will happen a lot in the puzzles in this book and its companion volume. The length of the solution path isn't specified for any puzzle, and many of them will meander aimlessly around the grid before homing in on the goal. Sometimes the solution path will pass right by the destination cell without the ability to move onto it. It's by design. Just keep going and you'll reach the end. Some backtracking may be necessary. That's by design too.



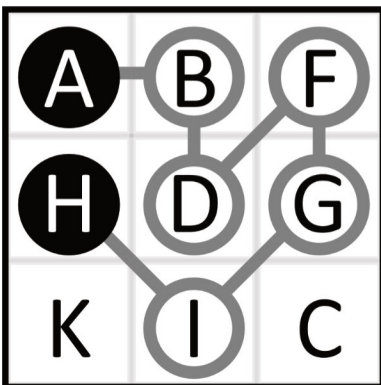
We've already noted we can move from the F in the upper right corner to the open G below it. The grid to the left shows the result of the move.

From the G, we can move to any open adjacent cell containing one of the letters E, F, G, H, or I. There's only one such choice available to us, so we'll move from the G to the I, as shown below to the right.

From the I, we can move to an open adjacent cell holding one of the letters G, H, I, J, or K. The highlighted H happens to occupy a cell adjacent to the I, so while the K is a legal move, it's not the right move. Moving to the K would provide no path forward, meaning we'd need to backtrack. So let's move to the H and finish the puzzle. The full solution path is shown to the left.



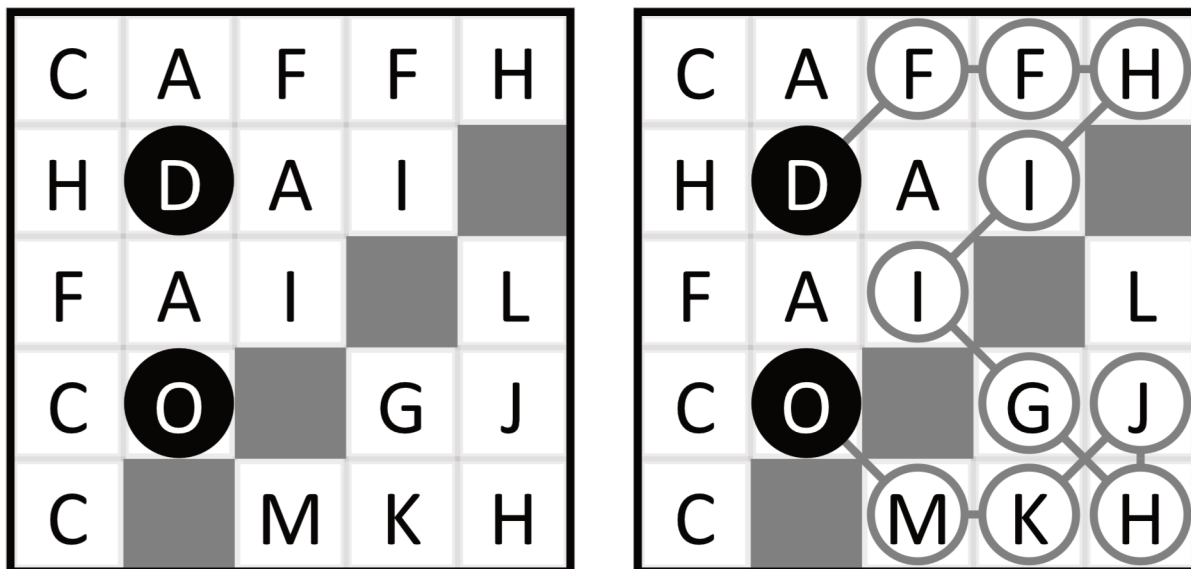
highlighted H happens to occupy a cell adjacent to the I, so while the K is a legal move, it's not the right move. Moving to the K would provide no path forward, meaning we'd need to backtrack. So let's move to the H and finish the puzzle. The full solution path is shown to the left.



As an exercise, you may wish to work the puzzle in the other direction, from the highlighted H to the highlighted A, if you're interested in seeing that the solution path turns out to be the same regardless of which direction you

work in. The puzzle might be more easily worked in one direction than the other, so if you're stuck, consider starting from the other end. It's okay to meet up in the middle somewhere. Finding a path from one highlighted cell to the other is the only goal.

Let's look at one more example, this one on a 5x5 grid, still much smaller than the full-size 36x22 grids in this booklet and the companion volume, but large enough for us to make some additional valuable observations. We won't step through the solution for this puzzle cell by cell. The unsolved and solved grids are shown below.



First, notice that some of the cells are blocked off. The solution path won't go directly through such cells, but might pass between them on the diagonal.

Second, note how it's possible for the solution path to cross itself. This can only happen on a diagonal.

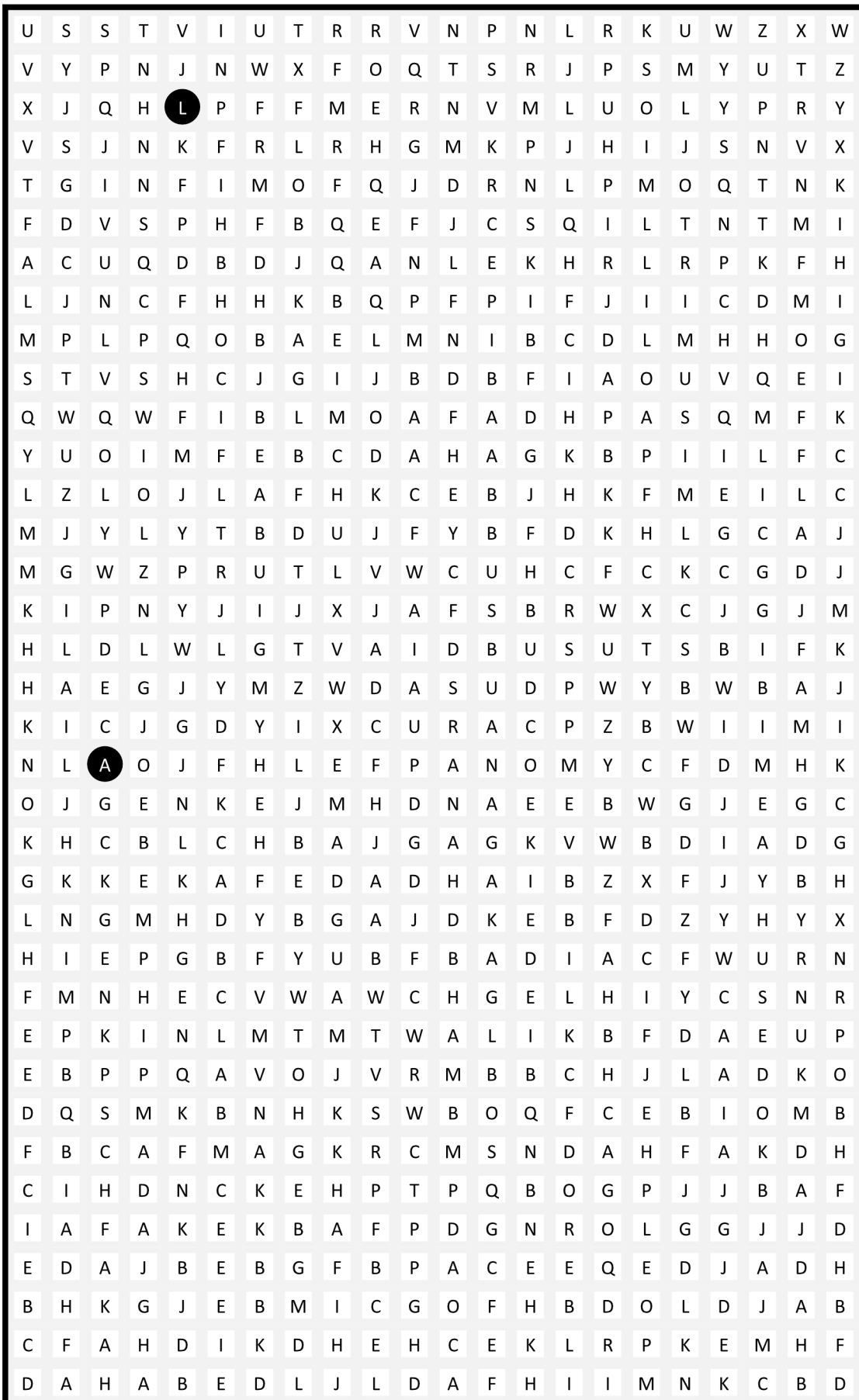
Third, note that sometimes the cell moved to has the same letter as the cell you're moving from, as evidenced by the two connected Fs in the grids above. This sort of move is fully in keeping with rule two.

Lastly, it can pay to initially assess the possible paths leading from both highlighted cells. Starting from the highlighted D has a greater risk for choosing a dead-end path than starting from the highlighted O. Three cells adjacent to the highlighted D are legal to move to, but only one of them leads to the highlighted O. On the other hand, if you started at the highlighted O, only one cell adjacent to the O is a legal move.

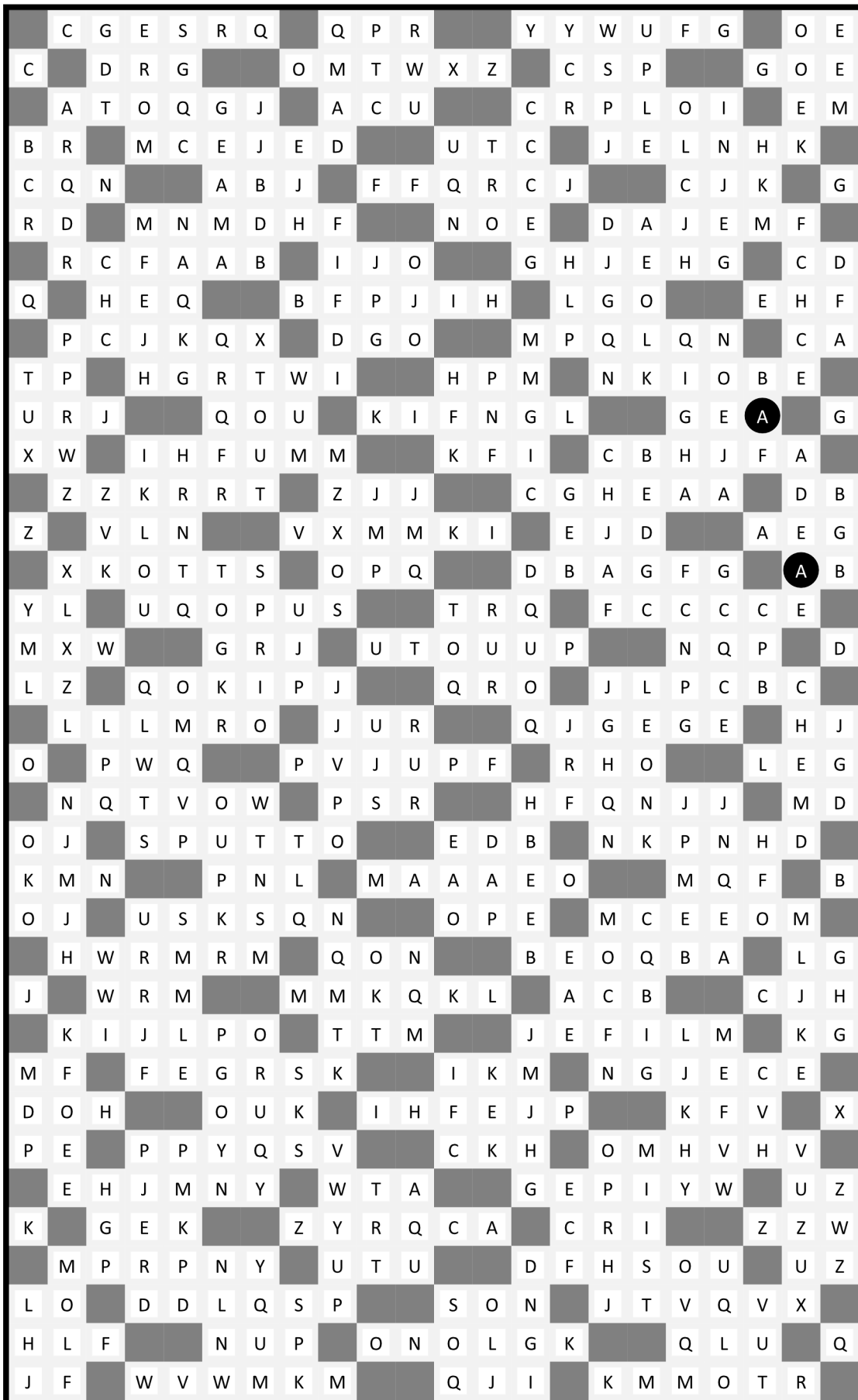
In fact, a starting move from the highlighted D to the C adjacent to it will lead you down a dead-end path six cells long, a path of significant length for a puzzle grid of this size. It's not expected you'll avoid all dead ends, but do know that some dead ends may be quite lengthy. Backtrack if you need to, and as far as you need to.

Look for more puzzle books from Eposic over time. Visit the Eposic web site at <https://eposic.com> to sign up for announcements of future products. Happy puzzling!

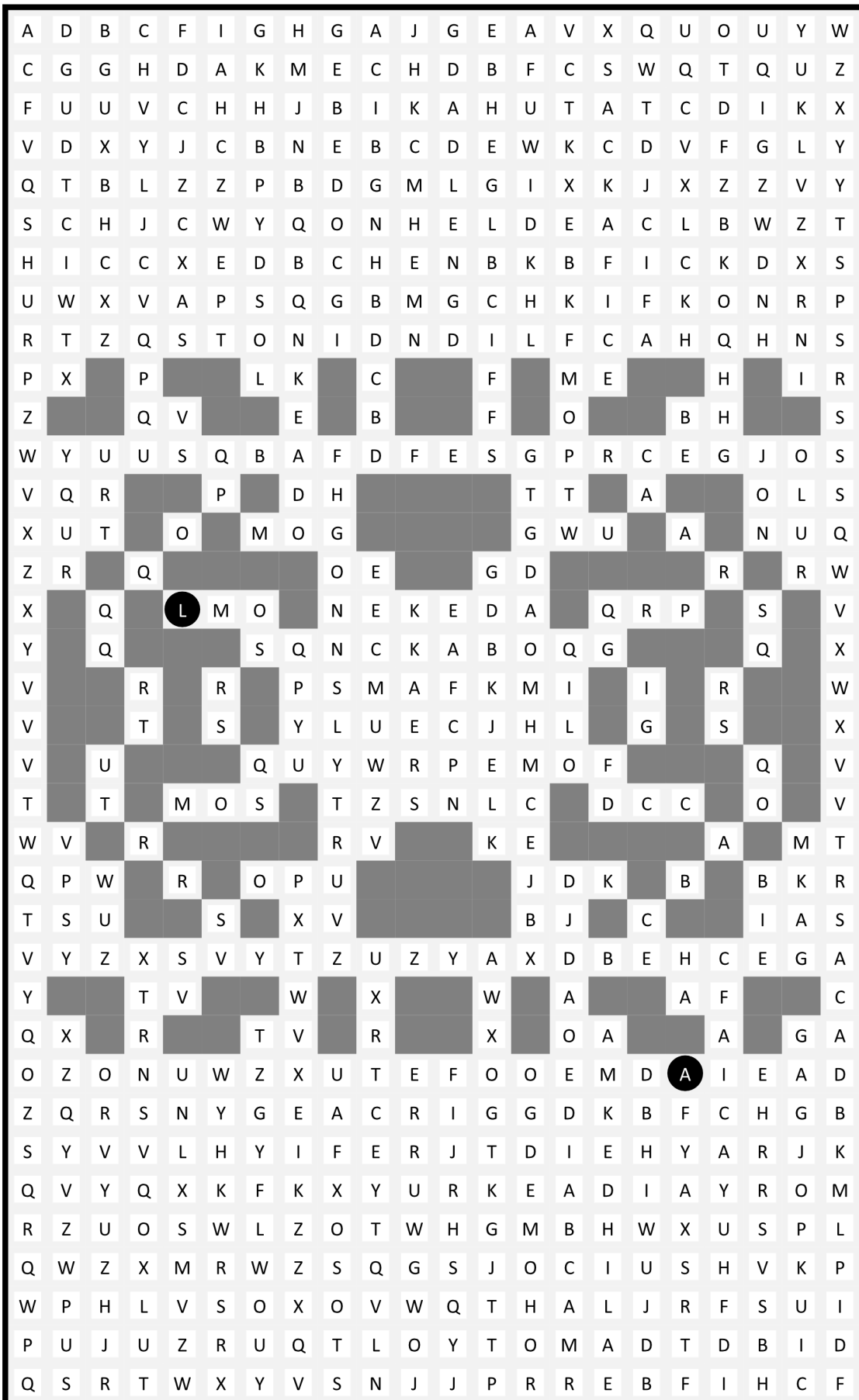
Puzzle 1



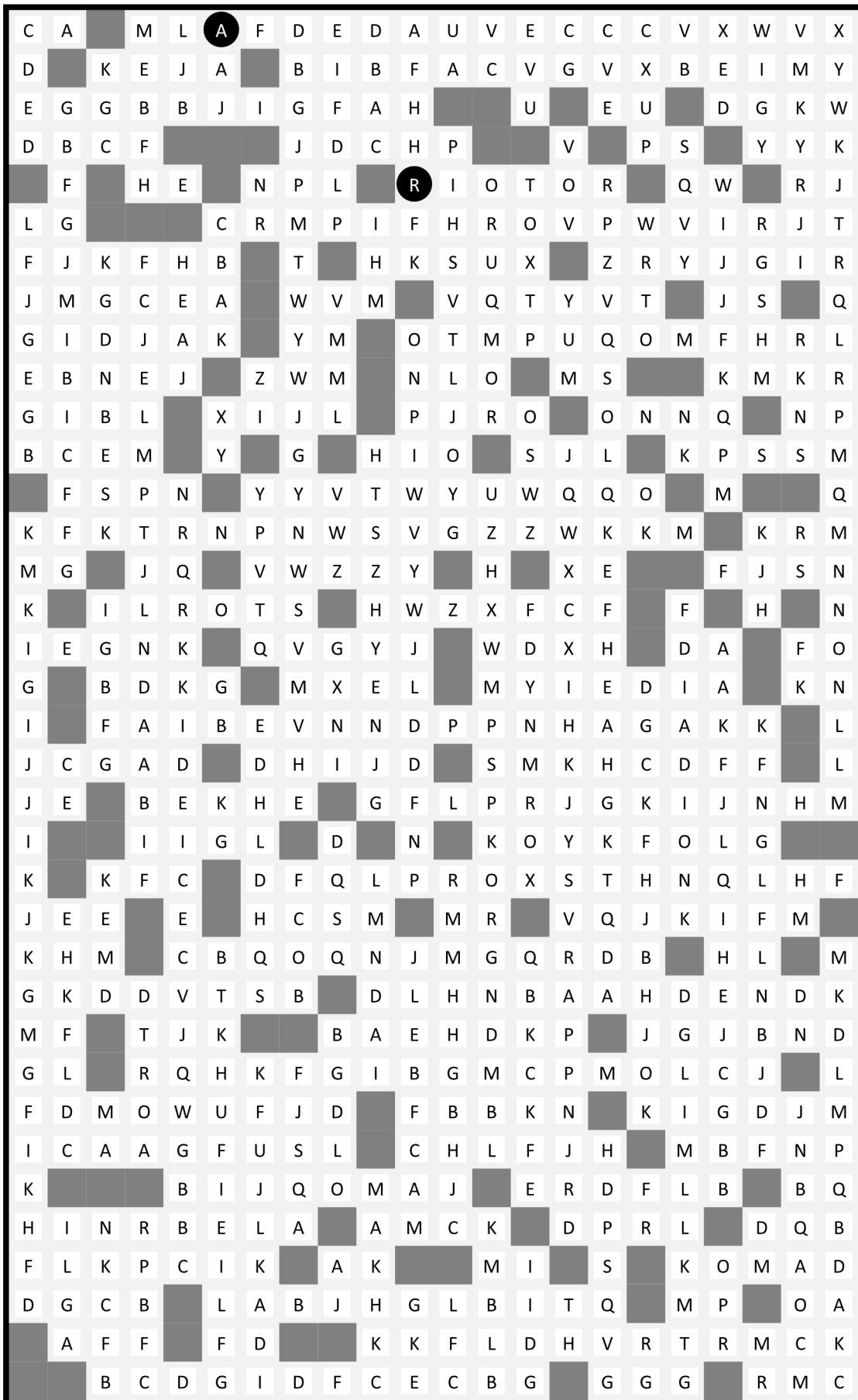
Puzzle 2



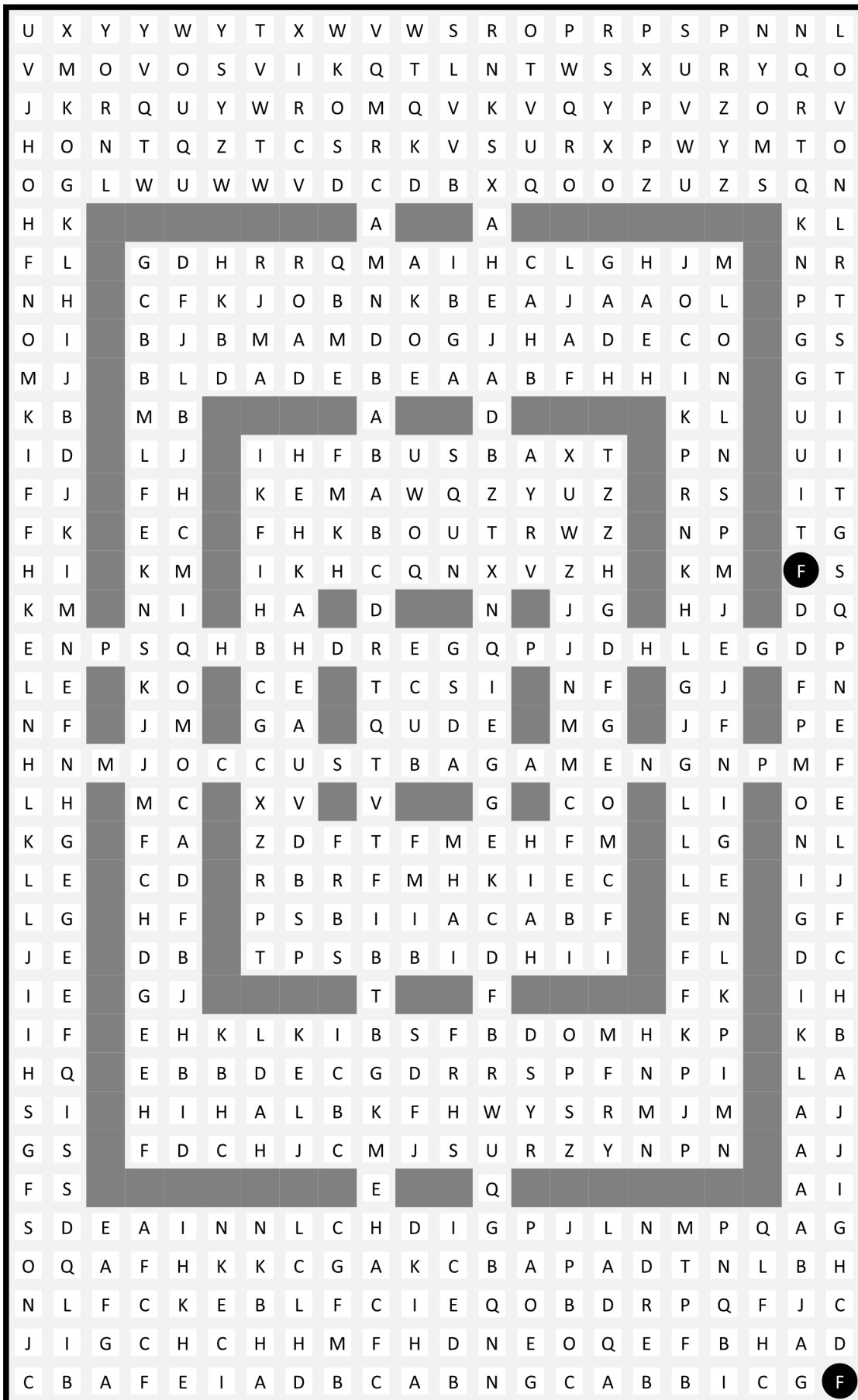
Puzzle 3



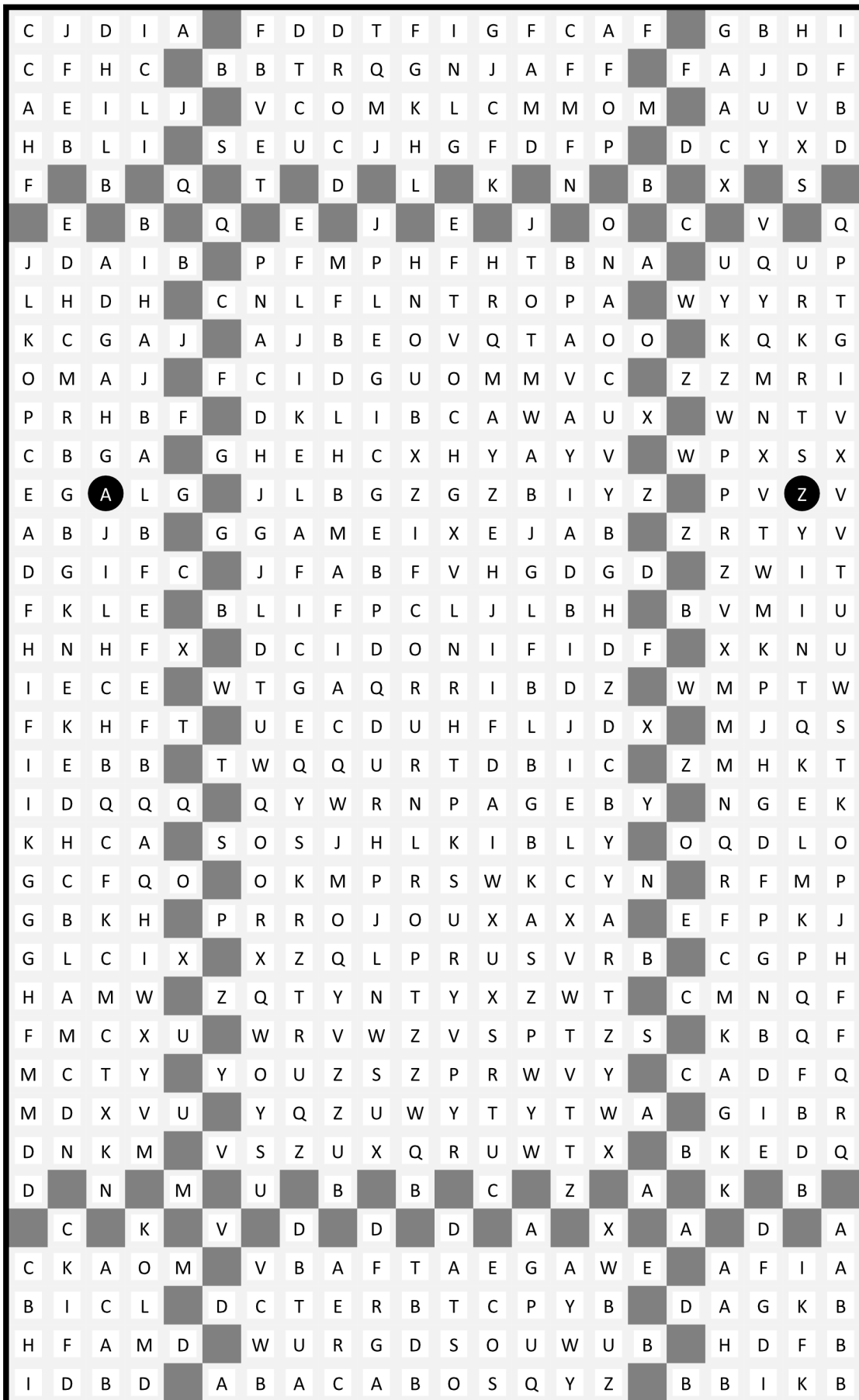
Puzzle 4



Puzzle 5



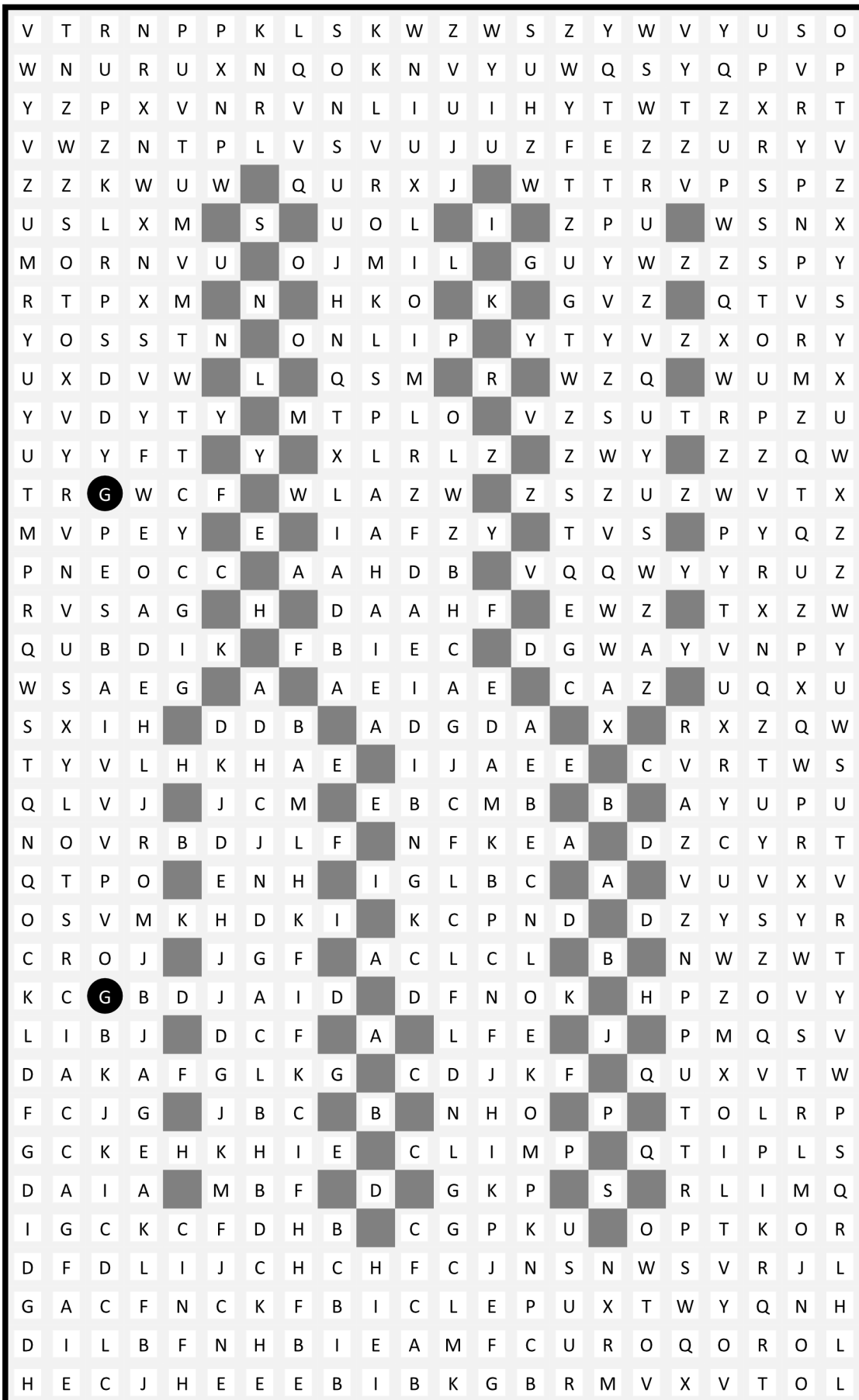
Puzzle 6



Puzzle 7

U	O	N	O	J	O	M	I	L	M	C	C	B	A	A	H	L	K	G	K	H	F	
T	Q	J	L	R	L	J	O		H	N	G	E		S	G	N	E	L	G	C	E	
R	N	P	H	P	I	R	P	A	L	F	I	K	K	Q	J	F	O	I	K	A	G	
O	L	R	M	N	R	J	B	N	B	D	L	N	O	L	H	T	F	P	E	D	C	
O	H	I	E	C	A	A	I		N	F	P	J		R	T	I	Q	H	B	G	H	
M	K	F	B	H	F	K	E	H	M				R	L	N	P	K	S	U	B	E	C
J	C	L	I	C	D	G			G	K	V	S			F	H	J	W	A	Z	A	
C	G	E	G	M	A	H		E	V	T	J	V	T		D	A	C	B	W	Y	C	
I	B	N	B	K	B	E	C	U		Y	Y		R	F	H	J	E	J	L	F	E	
B	K	L	C	I	E	H	I	B	W	Q	T	X	V	U	B	D	K	F	N	H	C	
C	H	I	M	B	H	K	F	B		V	S		O	S	A	U	S	H	A	A	F	
L	C	C	A	K	H	B	D	G		Q	O		P	R	V	C	I	A	I	F	I	
K	I	F		F	L	L			G	F	N	L			A	T	G		C	A	G	
P		H	I	I	E										E	T	O	R		F		
P	T	M	L	S	G	H	G	E	L	J	H	J	K	N	L	L	T	P	C	D	A	
R	O	T	R	J		J			I	M	B	G			O		V	Q	A	F	B	
N				U	L	N	K	O	L	I	E	D	C	L	N	T	S				A	
J	P		Q	U	R	Q		M	I	N	B	H	I		K	N	Q	O		C	E	
L	O		Q	U	O	T		M	J	C	F	K	C		I	H	K	M		B	F	
N				Q	V	M	M	H	O	F	A	E	M	A	A	A	J				H	
X	S	V	N	R		V			L	J	H	E			F		A	K	I	G	K	
Z	W	T	X	N	S	W	D	E	D	F	C	A	D	D	H	I	H	A	D	J	M	
Z		R	P	Z	T											M	A	F	Q		H	
G	F	T		Y	U	O			W	D	E	D			H	A	K		K	P	I	
I	K	H	U	F	W	Q	R	X		X	G		F	C	G	A	M	J	P	L	J	
M	O	N	F	S	F	T	U	V		G	Z		A	G	D	O	C	P	E	G	I	
W	V	Q	J	T	V	D	L	D	F	I	Y	D	B	U	C	A	Q	L	N	D	K	
Q	O	T	H	Y	X	L	D	L		J	X		S	R	P	N	A	B	B	G	H	
T	R	F	B	E	G	J		I	J	T	V	Q	H		B	L	D	G	E	C	J	
E	U	D	H	C	M	I			Q	O	R	J			M	A	K	H	L	J	F	
D	T	E	N	I	F	K	M	O	A			L	P	H	K	D	C	B	C	D	I	
E	R	C	P	R	G	D	H		D	A	J	W		P	J	H	F	M	H	F	I	
F	K	P	M	T	W	B	I	F	B	I	U	R	O	M	F	N	O	K	A	A	D	
M	H	L	U	W	N	J	B	A	H	U	D	S	P	K	H	L	H	C	I	D	A	
P	J	P	N	Y	O	L	D		F	D	W	F		L	E	N	H	C	G	D	A	
R	S	S	R	Q	Y	Y	Y	W	X	Z	Y	U	E	E	M	D	D	J	I	E	A	

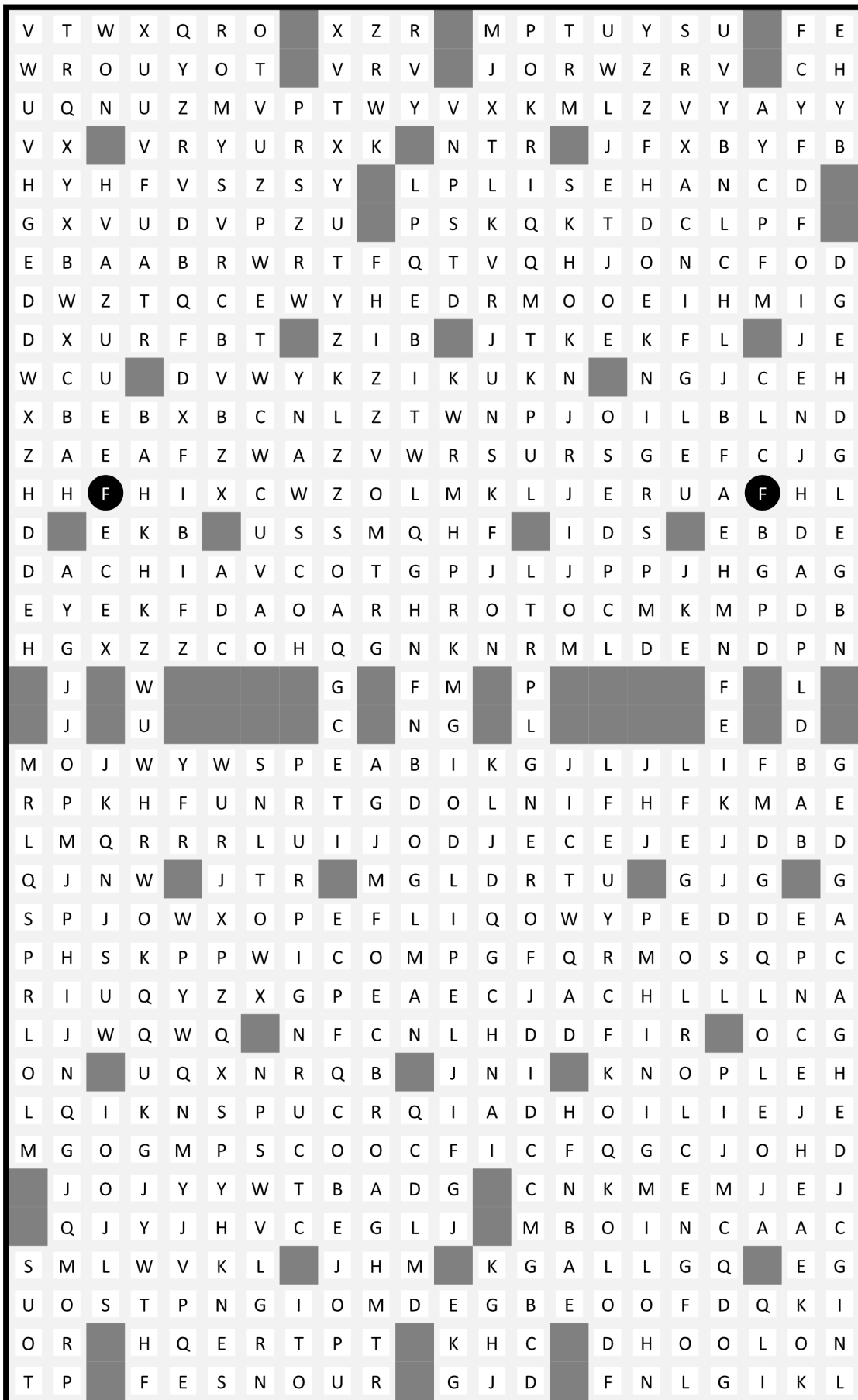
Puzzle 8



Puzzle 9

T	R	P	O	P	J	X	K	J	I	J	Y	J	L	R	T	P	O	N	O	O	M
J	O	T	M	L	Z	W	M	W	Y	W	K	H	N	P	K	M	T	R	J	L	I
G	J	V	J	Y	D	K	U	Z	J	V	T	R	R	M	J	Q	P	N	S	I	O
I	L	V	J	B	X	F	J	A	H	G	E	V	U	P	S	M	L	T	L	H	M
E	G	K	X	Z	V	D	I	E	C	D	N	M	P	H	M	F	U	R	Q	I	N
I	L	W	U	A	E	A	J	F	L	N	B	J	K	K	I	H	J	O	M	K	P
H	D	K	A	S	C	G	J	G	K	E	F	G	O	N	L	Q	P	H	G	P	H
H	M	C	G	J	I	M	K	H	L	O	I	K	F	H	X	H	J	V	R	J	N
J	F	J	C	E	B	F	C	A	I	M	H	L	C	D	C	Z	W	J	J	M	P
J	G	J	A	J	I	A	D	L	A	E	L	E	M	G	I	K	Y	U	N	K	J
A	E	H	C	L	G	L	E	G	J	A	D	I	D	C	F	D	B	X	T	U	P
	B	L	I	E	I	J	H	K	B	K	J	G	F	K	I	G	A	K	Z	N	S
C	E	H	L	C	Q	P	S	M	A	G	B	M	D	N	L	C	N	Y	M	P	R
A	J	C	J	R	F	N	Q	N	E	C	O	L	J	K	D	O	X	O	U	V	X
H	E	P	C	C	D	L	T	P	F	H	W	Q	F	G	F	Z	R	Z	S	P	Y
Q	H	H	Q	S	F	R	J	H	Q	S	N	U	S	Y	Z	D	P	U	R	O	W
E	P	Q	F	H	R	M	G	M	N	P	M	Z	V	P	W	S	D	P	U	Y	O
Q	F	I	E	C	O	Q	M	H	K	H	Y	Q	R	U	S	V	Z	Z	X	L	M
S	E	H	K	L	E	L	E	N	P	I	W	V	T	Z	N	Y	F	V	T	Y	O
G	Q	V	X	D	K	B	D	K	F	E	Y	P	S	V	X	O	G	I	Y	L	O
Q	G	S	T	Y	C	Z	H	E	K	O	Z	S	N	L	R	Q	Z	J	O	X	M
S	I	E	V	D	W	Y	A	F	M	I	Y	O	Q	Y	T	W	Z	L	M	K	Y
K	C	Y	W	A	V	C	Y	L	H	F	Y	N	Z	M	Y	V	J	Y	T	S	X
F	E	A	B	E	B	G	A	C	N	P	M	Z	P	O	Z	I	X	J	V	W	S
A	B		H	E	I	E	J	P	A	R	T	Y	M	C	M	N	V	H	Q	F	Q
J	H	C	A	F	C	F	H	N	B	U	N	K	I	F	E	H	E	P	G	R	G
E	B	H	F	I	O	J	M	C	W	S	Q	O	A	H	A	F	C	R	O	A	F
D	Q	S	I	E	L	M	D	I	T	P	J	M	K	C	J	R	B	E	A	N	A
S	F	P	I	D	H	S	B	E	G	K	H	O	D	F	V	A	P	A	N	H	A
C	F	N	L	H	N	Q	F	I	J	N	G	D	M	M	O	T	R	N	E	C	F
E	A	C	K	H	L	K	P	M	N	T	E	T	V	R	P	U	W	C	G	J	E
E	L	K	E	N	H	Q	K	R	Q	M	S	M	N	V	N	Q	Z	Y	C	J	M
M	I	G	N	D	J	N	O	T	O	I	Q	P	K	V	Y	Y	Q	E	K	M	G
I	E	O	L	B	J	Q	L	H	K	L	S	M	U	N	Q	R	Y	F	N	I	J
H	P	E	J	N	J	N	J	O	N	I	M	Y	W	P	W	N	X	M	F	G	D
M	M	L	H	N	J	P	R	Q	R	R	S	Q	P	V	Y	Z	N	G	O	N	F

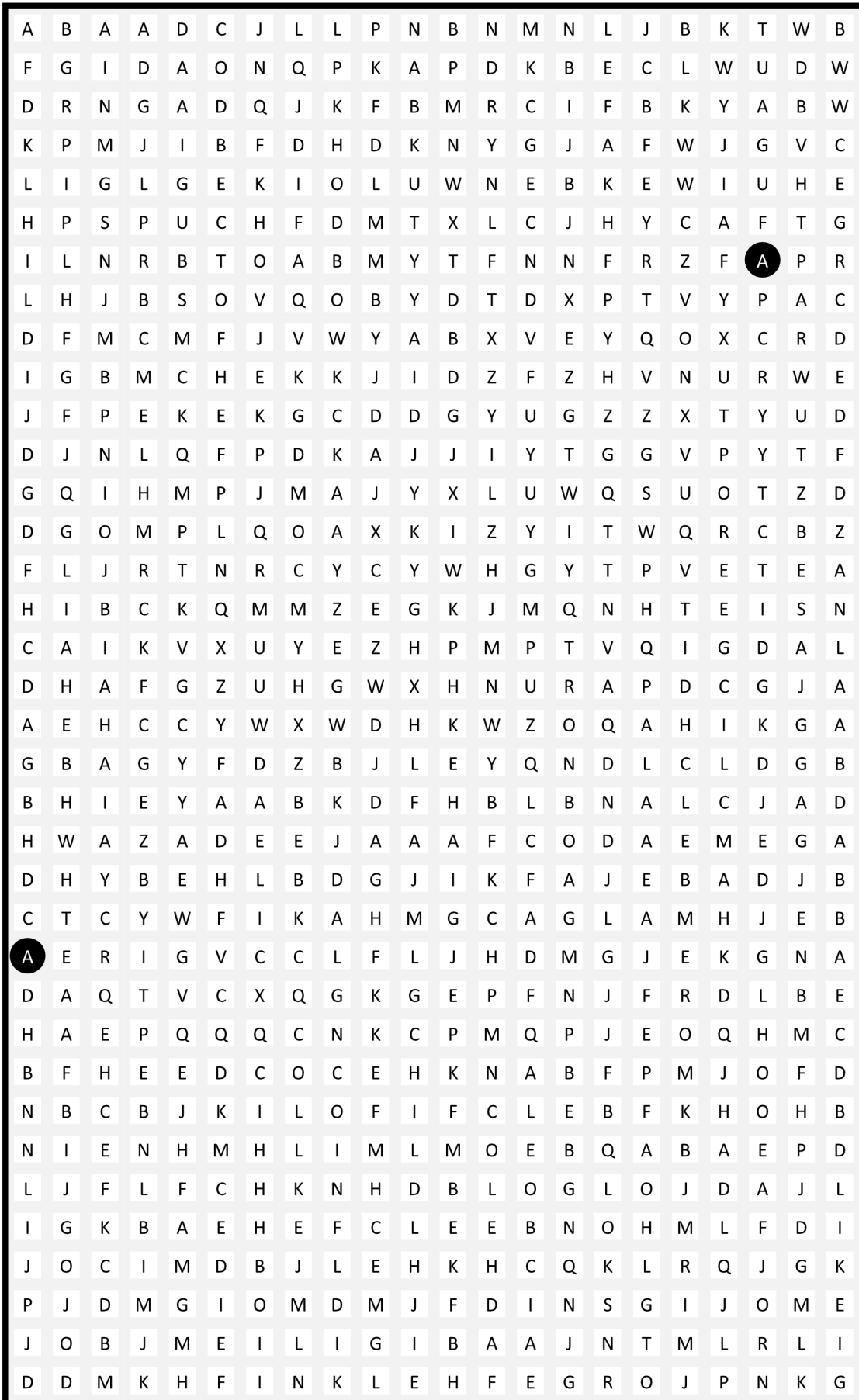
Puzzle 10



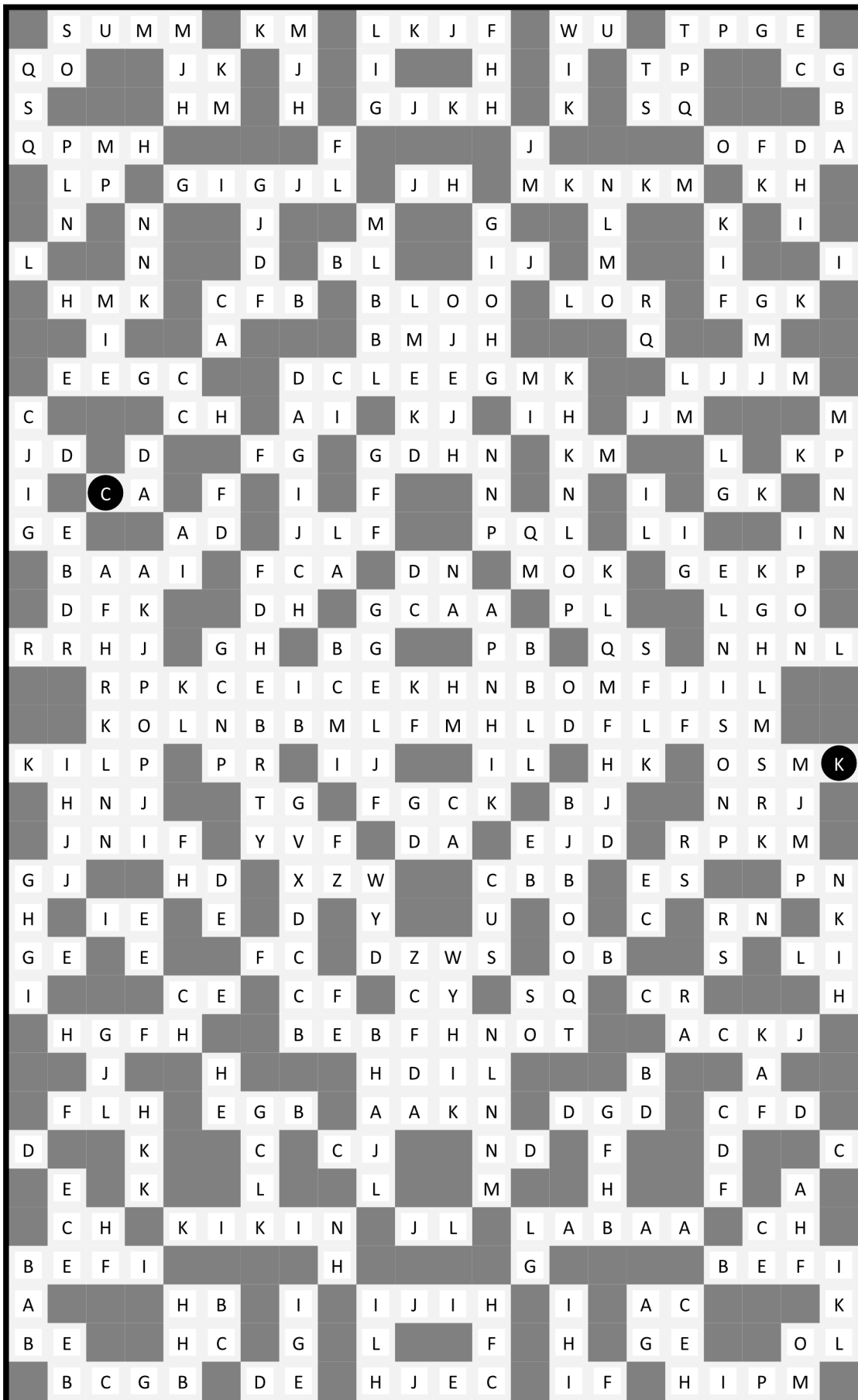
Puzzle 11

H	C	H	G	H	E	E		F	G	A	D	F	D		E	C	L	C	E	G	A
K	J	E	D	C	B	A		J	B	G	A	A	C		F	H	J	G	A	A	D
M	N	V	W	W	X	W		I	F	D	J	D	F		I	D	A	J	F	J	B
P	V	Y	L	Z	S	Q		I	B	O	M	I	H		K	G	G	B	D	H	A
R	U	N	P	Y	V	T		F	K	E	I	M	L		E	J	D	H	A	H	C
Q	T	Q	X	N	W	R	F	C	F	K	L	I	F	H	G	L	C	H	D	E	A
M	Q	J	M	Z	Z	S		A	D	H	H	D	B		B	M	D	L	B	H	F
O	L	D	J	M	J	H		E	K	M	O	I	A		A	D	J	I	I	M	J
C	C	G	F	E	K		J		D	J	I	Q		A		N	M	L	O	L	H
			I			N	L	F					B	D	L		B				
B	C	I	P	Q	R		P		H	G	E	A		N		C	D	G	A	G	B
E	F	Q	G	T	N	P		P	K	M	B	D	G		L	A	G	M	B	G	C
N	L	E	L	J	M	Q		T	Q	J	I	E	B		K	C	F	M	C	E	I
K	G	I	M	E	K	S	V	R	L	O	B	H	G	J	F	D	K	J	F	A	K
M	N	N	G	P	R	W		V	N	J	E	B	E		K	K	B	G	K	N	L
I	I	K	Q	H	M	W		O	T	I	D	G	A		B	A	U	L	E	Q	O
C	A	P	M	D	J	L		T	N	T	J	A	D		D	T	J	U	S	F	D
F	D	K	N	F	N	O		J	L	R	H	A	D		S	Q	L	C	C	H	I
H	J	C	H	K	Q	L		I	E	I	D	E	A		O	L	B	F	I	E	D
L	A	E	J	F	R	J		G	C	A	H	H	F		Q	J	G	D	J	B	J
I	J	D	P	Q	H	T		H	L	M	B	C	J		M	Q	L	G	A	J	B
G	B	A	A	C	P	V		K	G	C	M	I	A		J	O	J	C	M	H	A
J	G	P	N	J	A	R	U	J	H	B	Q	A	K	H	Q	L	H	A	F	K	B
H	K	G	R	L	C	P		V	X	R	O	A	M		H	M	C	D	J	C	J
N	Q	J	U	T	O	E		Z	Q	V	W	P	P		E	G	N	K	M	A	L
O	L	S	P	Q	C		E		N	P	T	Y		Q		L	E	N	A	O	L
			N			F	K	L					Z	X	O		C				
E	C	S	Q	O	G		I		Y	W	W	Z		V		N	P	P	J	Q	U
G	S	D	B	J	I	C		J	S	T	T	Y	V		T	M	Y	K	O	R	T
F	T	A	K	G	N	D		U	H	E	Q	R	U		J	K	Y	I	X	M	V
D	V	B	H	C	C	M	Q	U	J	G	O	N	O	U	H	G	J	Y	P	Y	U
E	I	G	D	M	N	Q		P	S	L	S	V	L		U	E	Y	N	L	L	Y
K	Q	E	J	K	P	M		Q	N	P	T	Q	L		E	W	T	K	T	W	N
M	O	L	A	D	B	L		L	S	W	T	J	Q		F	H	V	I	V	R	P
L	E	K	F	A	L	O		M	P	U	X	O	K		I	K	X	J	M	S	N
D	K	D	I	G	M	P		Q	K	R	T	N	K		Y	W	M	N	P	R	M

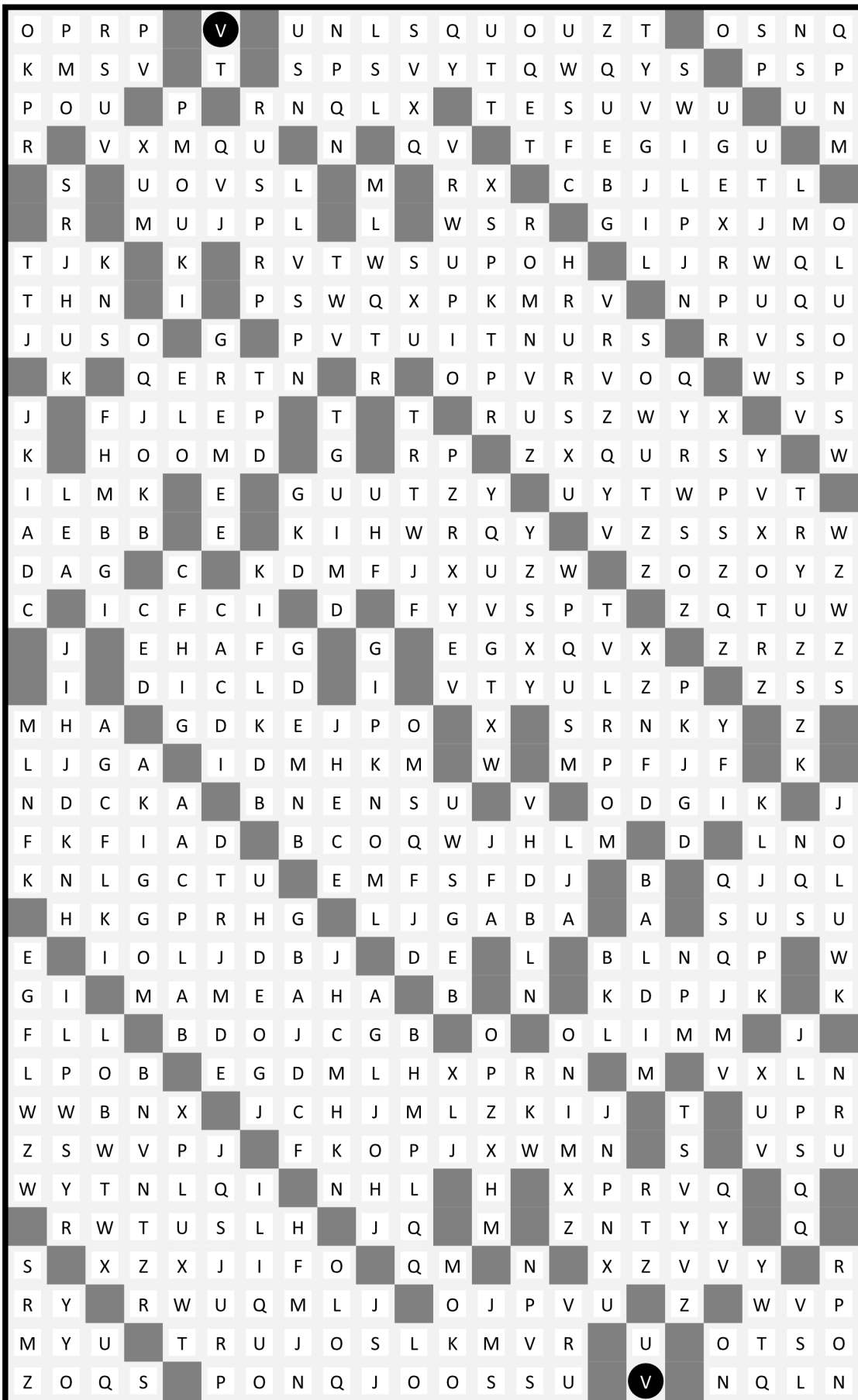
Puzzle 12



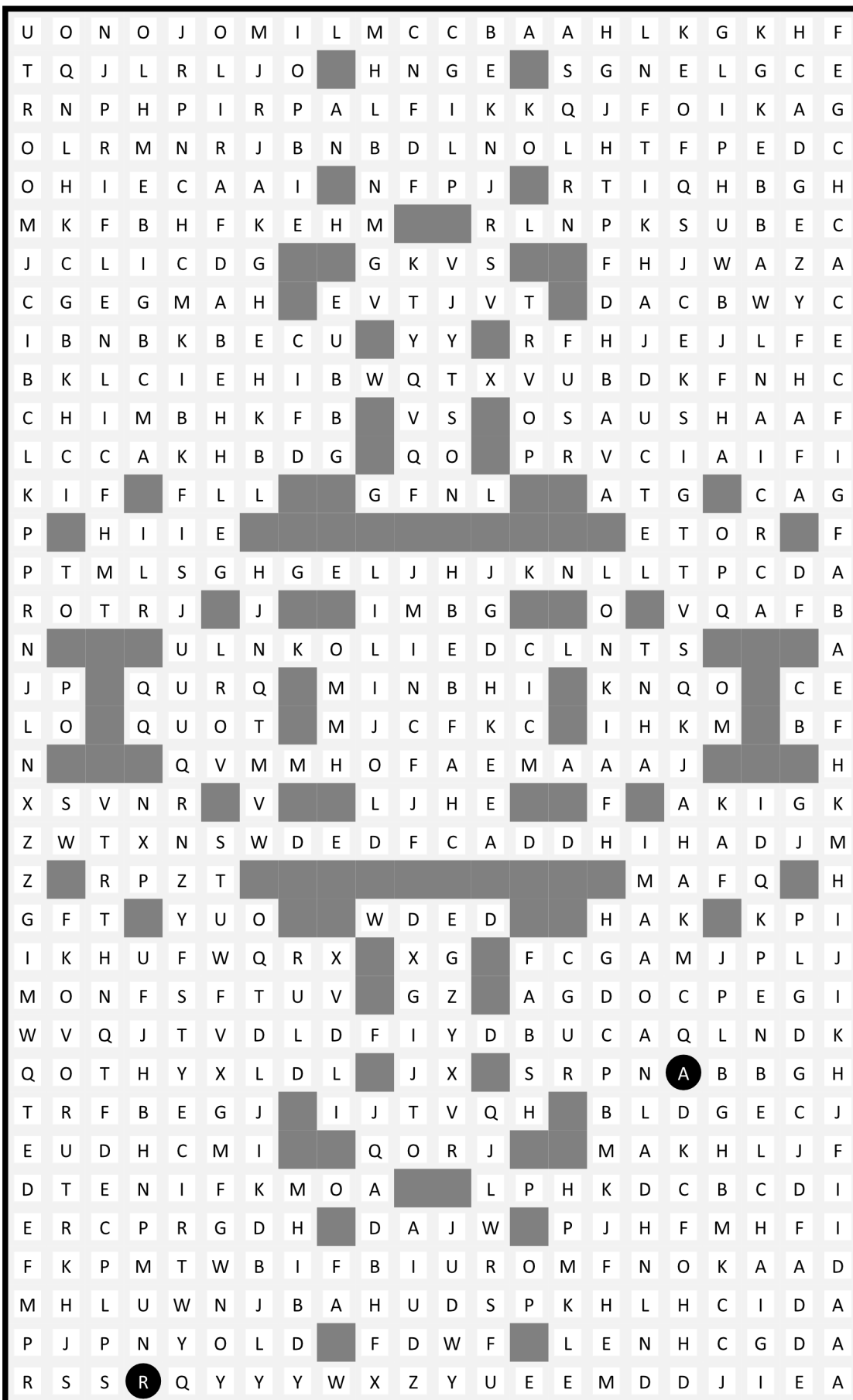
Puzzle 13



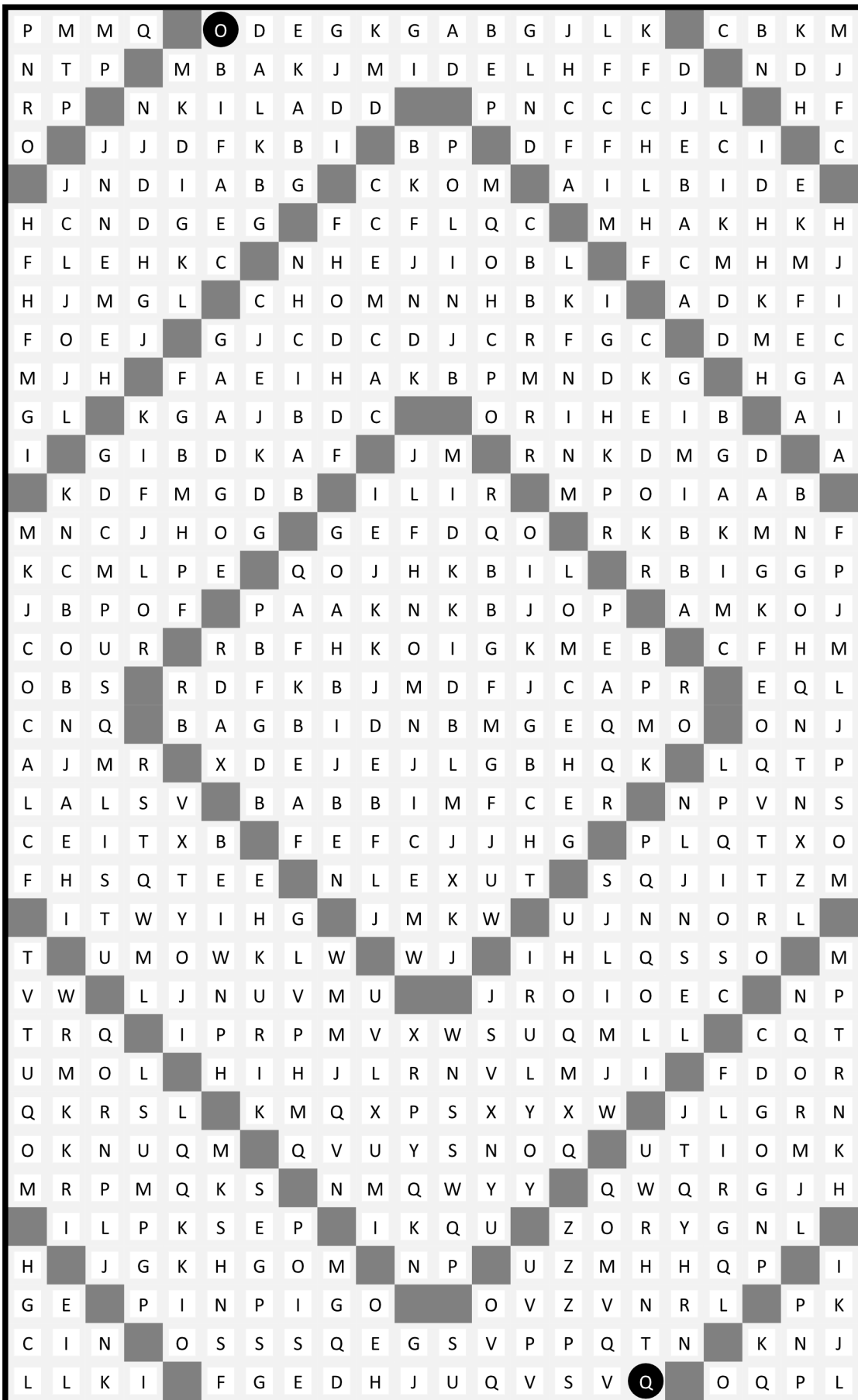
Puzzle 14



Puzzle 15



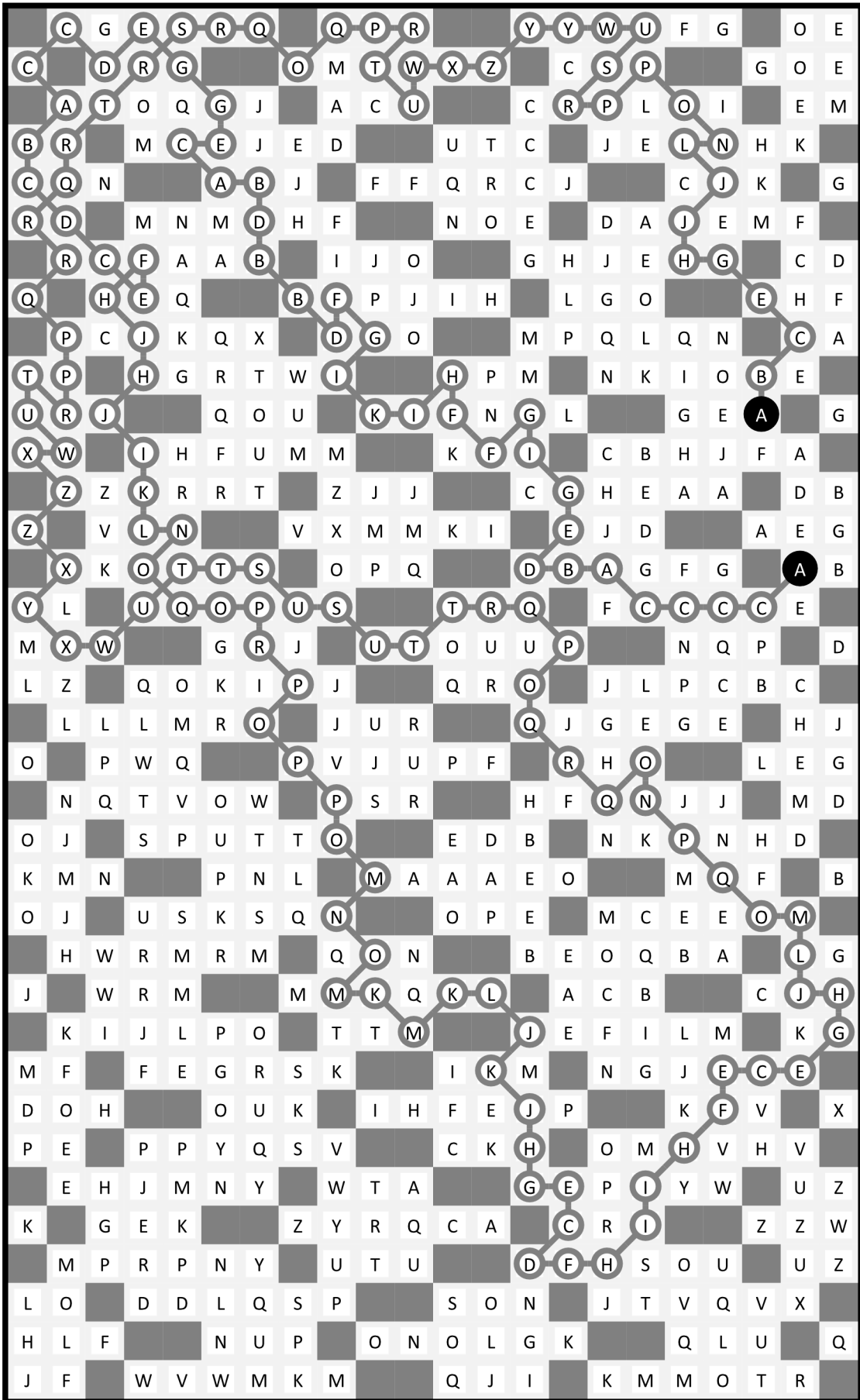
Puzzle 16



Puzzle 1

U	S	S	T	V	I	U	T	R	R	V	N	P	N	L	R	K	U	W	Z	X	W
V	Y	P	N	J	N	W	X	F	O	Q	T	S	R	J	P	S	M	Y	U	T	Z
X	J	Q	H	L	P	F	F	M	E	R	N	V	M	L	U	O	L	Y	P	R	Y
V	S	J	N	K	F	R	L	R	H	G	M	K	P	J	H	I	J	S	N	V	X
T	G	I	N	F	I	M	O	F	Q	J	D	R	N	L	P	M	O	Q	T	N	K
F	D	V	S	P	H	F	B	Q	E	F	J	C	S	Q	I	L	T	N	T	M	I
A	C	U	Q	D	B	D	J	Q	A	N	L	E	K	H	R	L	R	P	K	F	H
L	J	N	C	F	H	H	K	B	Q	P	F	P	I	F	J	I	I	C	D	M	I
M	P	L	P	Q	O	B	A	E	L	M	N	I	B	C	D	L	M	H	H	O	G
S	T	V	S	H	C	J	G	I	J	B	D	B	F	I	A	O	U	V	Q	E	I
Q	W	Q	W	F	I	B	L	M	O	A	F	A	D	H	P	A	S	Q	M	F	K
Y	U	O	I	M	F	E	B	C	D	A	H	A	G	K	B	P	I	I	L	F	C
L	Z	L	O	J	L	A	F	H	K	C	E	B	J	H	K	F	M	E	I	L	C
M	J	Y	L	Y	T	B	D	U	J	F	Y	B	F	D	K	H	L	G	C	A	J
M	G	W	Z	P	R	U	T	L	V	W	C	U	H	C	F	C	K	C	G	D	J
K	I	P	N	Y	J	I	J	X	J	A	F	S	B	R	W	X	C	J	G	J	M
H	L	D	L	W	L	G	T	V	A	I	D	B	U	S	U	T	S	B	I	F	K
H	A	E	G	J	Y	M	Z	W	D	A	S	U	D	P	W	Y	B	W	B	A	J
K	I	C	J	G	D	Y	I	X	C	U	R	A	C	P	Z	B	W	I	I	M	I
N	L	A	O	J	F	H	L	E	F	P	A	N	O	M	Y	C	F	D	M	H	K
O	J	G	E	N	K	E	J	M	H	D	N	A	E	E	B	W	G	J	E	G	C
K	H	C	B	L	C	H	B	A	J	G	A	G	K	V	W	B	D	I	A	D	G
G	K	K	E	K	A	F	E	D	A	D	H	A	I	B	Z	X	F	J	Y	B	H
L	N	G	M	H	D	Y	B	G	A	J	D	K	E	B	F	D	Z	Y	H	Y	X
H	I	E	P	G	B	F	Y	U	B	F	B	A	D	I	A	C	F	W	U	R	N
F	M	N	H	E	C	V	W	A	W	C	H	G	E	L	H	I	Y	C	S	N	R
E	P	K	I	N	L	M	T	M	T	W	A	L	I	K	B	F	D	A	E	U	P
E	B	P	P	Q	A	V	O	J	V	R	M	B	B	C	H	J	L	A	D	K	O
D	Q	S	M	K	B	N	H	K	S	W	B	O	Q	F	C	E	B	I	O	M	B
F	B	C	A	F	M	A	G	K	R	C	M	S	N	D	A	H	F	A	K	D	H
C	I	H	D	N	C	K	E	H	P	T	P	Q	B	O	G	P	J	J	B	A	F
I	A	F	A	K	E	K	B	A	F	P	D	G	N	R	O	L	G	G	J	J	D
E	D	A	J	B	E	B	G	F	B	P	A	C	E	E	Q	E	D	J	A	D	H
B	H	K	G	J	E	B	M	I	C	G	O	F	H	B	D	O	L	D	J	A	B
C	F	A	H	D	I	K	D	H	E	H	C	E	K	L	R	P	K	E	M	H	F
D	A	H	A	B	E	D	L	J	L	D	A	F	H	I	I	M	N	K	C	B	D

Puzzle 2

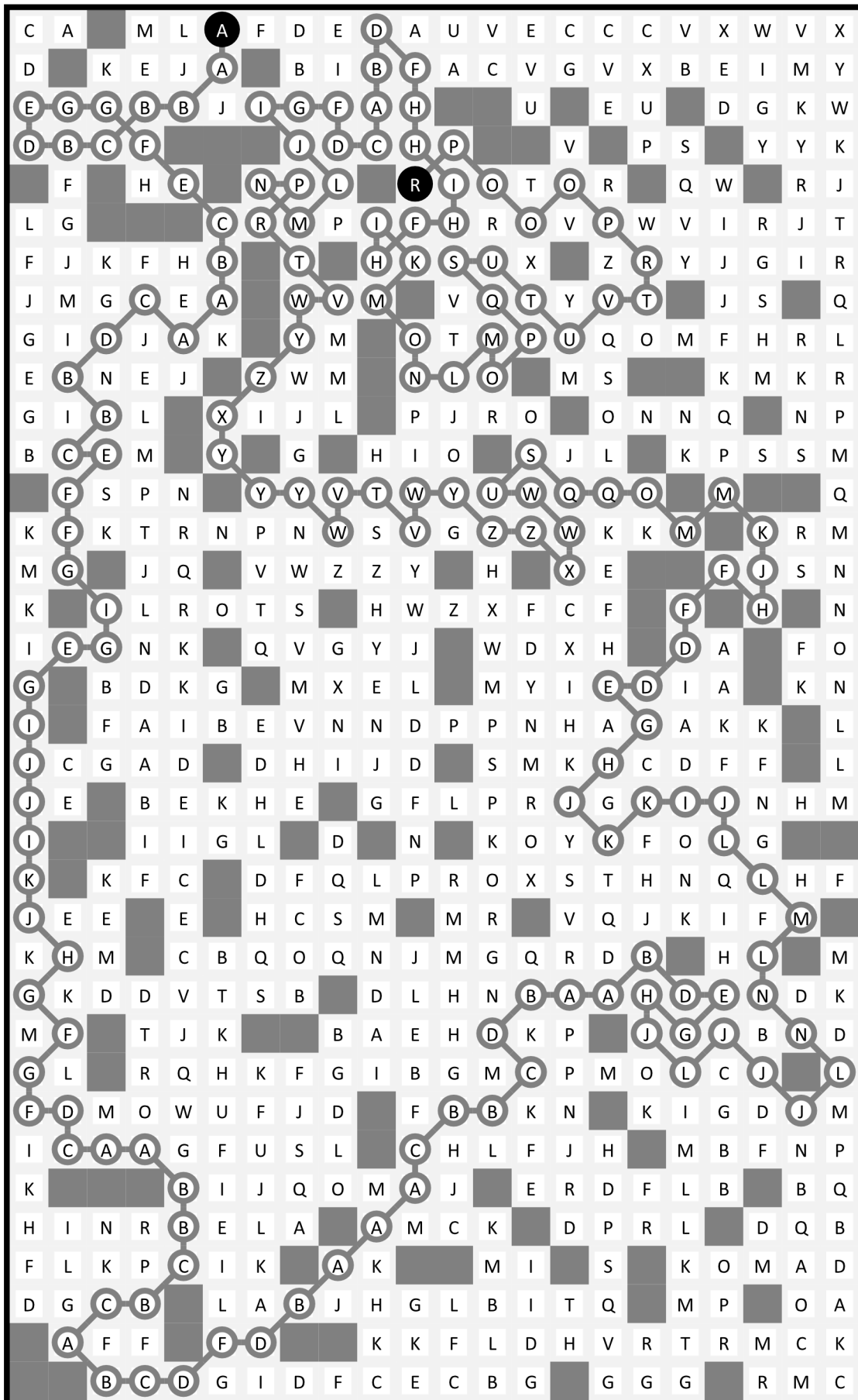


Puzzle 3

A 20x20 grid puzzle. The grid contains letters and some cells are shaded gray. A path of letters is highlighted with a gray line and circles around each letter. The path starts at (1,5) and ends at (19,1). Two cells are highlighted in black: (13,3) containing 'L' and (17,17) containing 'A'. The grid is as follows:

A	D	B	C	F	I	G	H	G	A	J	G	E	A	V	X	Q	U	O	U	Y	W		
C	G	G	H	D	A	K	M	E	C	H	D	B	F	C	S	W	Q	T	Q	U	Z		
F	U	U	V	C	H	H	J	B	I	K	A	H	U	T	A	T	C	D	I	K	X		
V	D	X	Y	J	C	B	N	E	B	C	D	E	W	K	C	D	V	F	G	L	Y		
Q	T	B	L	Z	Z	P	B	D	G	M	L	G	I	X	K	J	X	Z	Z	V	Y		
S	C	H	J	C	W	Y	Q	O	N	H	E	L	D	E	A	C	L	B	W	Z	T		
H	I	C	C	X	E	D	B	C	H	E	N	B	K	B	F	I	C	K	D	X	S		
U	W	X	V	A	P	S	Q	G	B	M	G	C	H	K	I	F	K	O	N	R	P		
R	T	Z	Q	S	T	O	N	I	D	N	D	I	L	F	C	A	H	Q	H	N	S		
P	X		P		L	K		C		F		M	E		H		I		R				
Z		Q	V		E		B		F		O		B	H		S							
W	Y	U	U	S	Q	B	A	F	D	F	E	S	G	P	R	C	E	G	J	O	S		
V	Q	R		P		D	H					T	T		A				O	L	S		
X	U	T		O		M	O	G				G	W	U		A			N	U	Q		
Z	R		Q					O	E			G	D						R		R	W	
X		Q		L	M	O		N	E	K	E	D	A		Q	R	P		S		V		
Y		Q				S	Q	N	C	K	A	B	O	Q	G					Q		X	
V			R		R			P	S	M	A	F	K	M	I				R			W	
V			T		S			Y	L	U	E	C	J	H	L				S			X	
V		U			Q	U		Y	W	R	P	E	M	O	F				Q			V	
T		T		M	O	S		T	Z	S	N	L	C		D	C	C		O			V	
W	V		R					R	V			K	E						A			M	T
Q	P	W		R		O	P	U				J	D	K		B			B		K	R	
T	S	U		S		X	V					B	J		C				I		A	S	
V	Y	Z	X	S	V	Y	T	Z	U	Z	Y	A	X	D	B	E	H	C	E	G		A	
Y			T	V				W		X		W		A				A	F			C	
Q	X		R			T	V		R			X		O	A				A			G	A
O	Z	O	N	U	W	Z	X	U	T	E	F	O	O	E	M	D		A	I	E	A	D	
Z	Q	R	S	N	Y	G	E	A	C	R	I	G	G	D	K	B	F	C	H	G		B	
S	Y	V	V	L	H	Y	I	F	E	R	J	T	D	I	E	H	Y	A	R	J		K	
Q	V	Y	Q	X	K	F	K	X	Y	U	R	K	E	A	D	I	A	Y	R	O		M	
R	Z	U	O	S	W	L	Z	O	T	W	H	G	M	B	H	W	X	U	S	P		L	
Q	W	Z	X	M	R	W	Z	S	Q	G	S	J	O	C	I	U	S	H	V	K		P	
W	P	H	L	V	S	O	X	O	V	W	Q	T	H	A	L	J	R	F	S	U		I	
P	U	J	U	Z	R	U	Q	T	L	O	Y	T	O	M	A	D	T	D	B	I		D	
Q	S	R	T	W	X	Y	V	S	N	J	J	P	R	R	E	B	F	I	H	C		F	

Puzzle 4



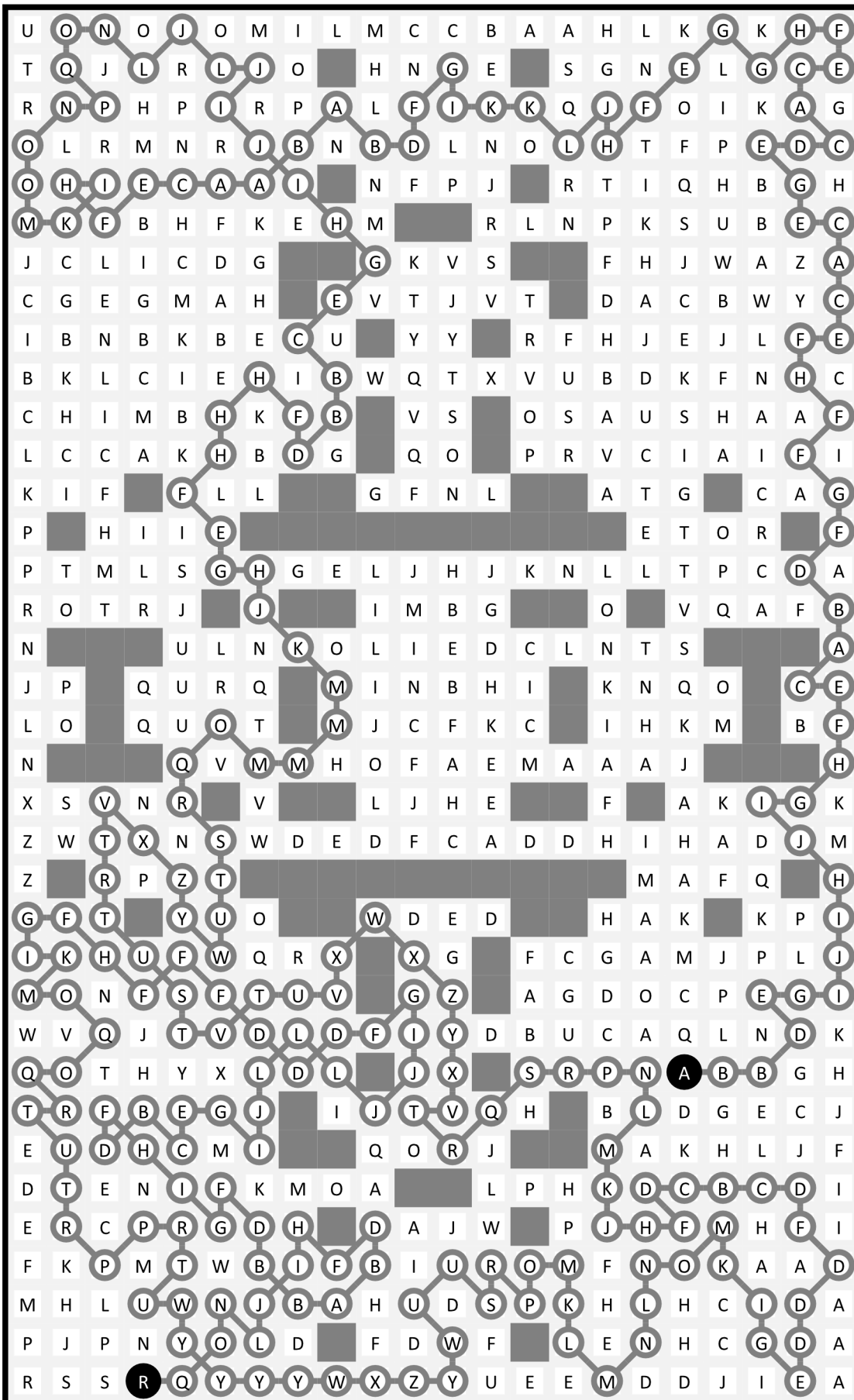
Puzzle 5

The puzzle consists of a 20x20 grid of letters. A path of 40 cells is highlighted with a thick grey border and contains the following letters in order: U, V, J, H, O, G, H, F, N, O, I, M, K, I, F, F, H, K, K, E, N, L, N, K, M, L, K, I, H, Q, S, F, S, S, O, N, J, C, O, Q, A, N, L, F, G, C, B, A, F, E, I, A, D, B, C, A, B, N, G, C, A, B, B, I, C, F. A large central area of the grid is shaded grey, forming a complex shape. The letters in the unshaded cells are: Row 1: U, X, Y, Y, W, Y, T, X, W, V, W, S, R, O, P, R, P, S, P, N, N, L. Row 2: V, M, O, V, O, S, V, I, K, Q, T, L, N, T, W, S, X, U, R, Y, Q, O. Row 3: J, K, R, Q, U, Y, W, R, O, M, Q, V, K, V, Q, Y, P, V, Z, O, R, V. Row 4: H, O, N, T, Q, Z, T, C, S, R, K, V, S, U, R, X, P, W, Y, M, T, O. Row 5: O, G, L, W, U, W, W, V, D, C, D, B, X, Q, O, O, Z, U, Z, S, Q, N. Row 6: H, K, A, A, K, L. Row 7: F, L, G, D, H, R, R, Q, M, A, I, H, C, L, G, H, J, M, N, R. Row 8: N, H, C, F, K, J, O, B, N, K, B, E, A, J, A, A, O, L, P, T. Row 9: O, I, B, J, B, M, A, M, D, O, G, J, H, A, D, E, C, O, G, S. Row 10: M, J, B, L, D, A, D, E, B, E, A, A, B, F, H, H, I, N, G, T. Row 11: K, B, M, B, A, D, K, L, U, I. Row 12: I, D, L, J, I, H, F, B, U, S, B, A, X, T, P, N, U, I. Row 13: F, J, F, H, K, E, M, A, W, Q, Z, Y, U, Z, R, S, I, T. Row 14: F, K, E, C, F, H, K, B, O, U, T, R, W, Z, N, P, T, G. Row 15: H, I, K, M, I, K, H, C, Q, N, X, V, Z, H, K, M, F, S. Row 16: K, M, N, I, H, A, D, N, J, G, H, J, D, Q. Row 17: E, N, P, S, Q, H, B, H, D, R, E, G, Q, P, J, D, H, L, E, G, D, P. Row 18: L, E, K, O, C, E, T, C, S, I, N, F, G, J, F, N. Row 19: N, F, J, M, G, A, Q, U, D, E, M, G, J, F, P, E. Row 20: H, N, M, J, O, C, C, U, S, T, B, A, G, A, M, E, N, G, N, P, M, F. Row 21: L, H, M, C, X, V, V, G, C, O, L, I, O, E. Row 22: K, G, F, A, Z, D, F, T, F, M, E, H, F, M, L, G, N, L. Row 23: L, E, C, D, R, B, R, F, M, H, K, I, E, C, L, E, I, J. Row 24: L, G, H, F, P, S, B, I, I, A, C, A, B, F, E, N, G, F. Row 25: J, E, D, B, T, P, S, B, B, I, D, H, I, I, F, L, D, C. Row 26: I, E, G, J, T, F, F, K, I, H. Row 27: I, F, E, H, K, L, K, I, B, S, F, B, D, O, M, H, K, P, K, B. Row 28: H, Q, E, B, B, D, E, C, G, D, R, R, S, P, F, N, P, I, L, A. Row 29: S, I, H, I, H, A, L, B, K, F, H, W, Y, S, R, M, J, M, A, J. Row 30: G, S, F, D, C, H, J, C, M, J, S, U, R, Z, Y, N, P, N, A, J. Row 31: F, S, E, Q, A, I. Row 32: S, D, E, A, I, N, N, L, C, H, D, I, G, P, J, L, N, M, P, Q, A, G. Row 33: O, Q, A, F, H, K, K, C, G, A, K, C, B, A, P, A, D, T, N, L, B, H. Row 34: N, L, F, C, K, E, B, L, F, C, I, E, Q, O, B, D, R, P, Q, F, J, C. Row 35: J, I, G, C, H, C, H, H, M, F, H, D, N, E, O, Q, E, F, B, H, A, D. Row 36: C, B, A, F, E, I, A, D, B, C, A, B, N, G, C, A, B, B, I, C, G, F.

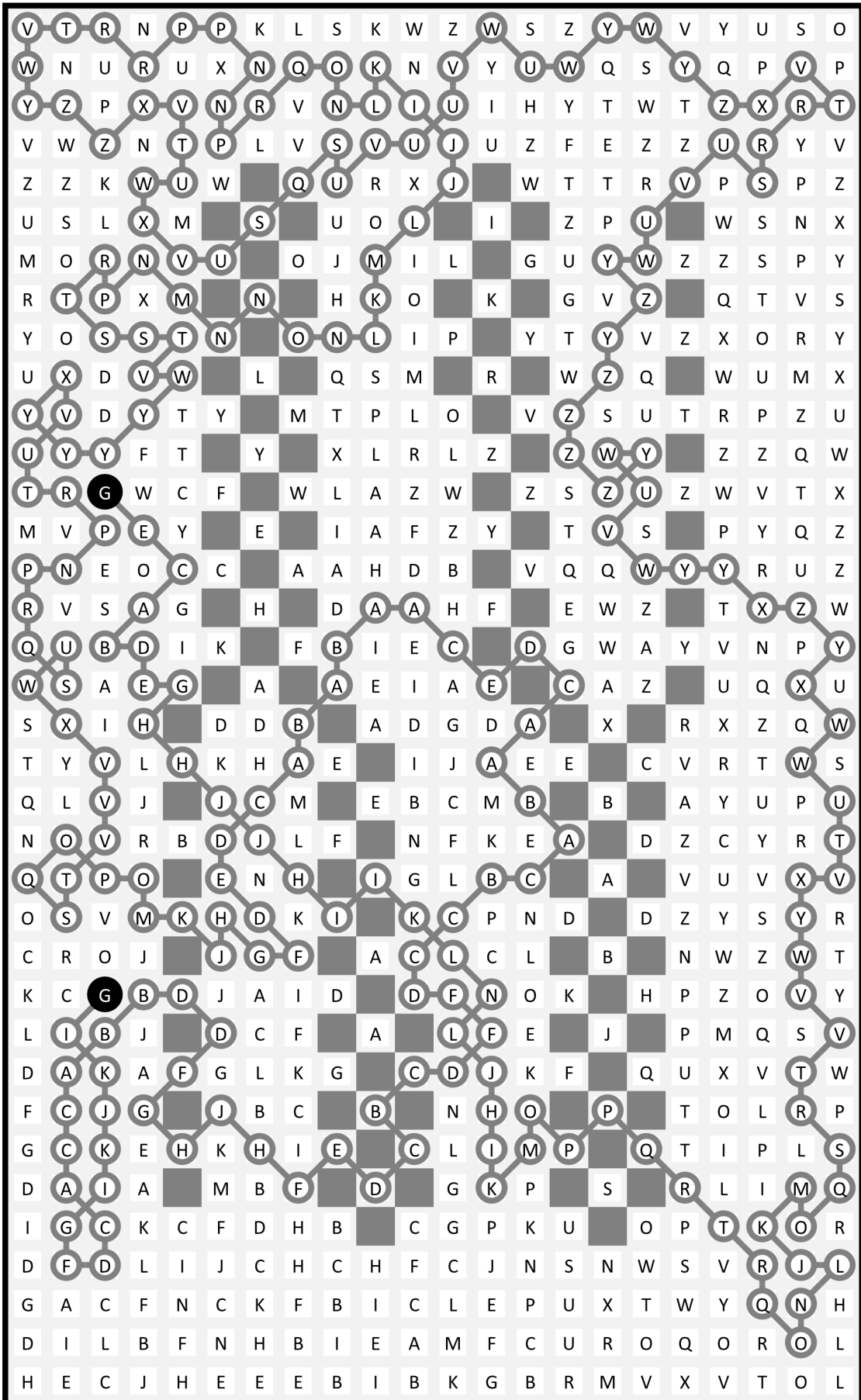
Puzzle 6

A 20x20 grid puzzle. The grid contains letters and shaded cells. A path of letters is highlighted with a thick grey line, starting from the top-left and ending at the bottom-right. The path consists of the following letters: C, F, H, C, B, B, T, R, Q, G, N, J, A, F, F, F, A, J, D, F, A, E, I, L, J, V, C, O, M, K, L, C, M, M, O, M, A, U, V, B, H, B, L, I, S, E, U, C, J, H, G, F, D, F, P, D, C, Y, X, D, F, B, Q, T, D, L, K, N, B, X, S, E, B, Q, E, J, E, J, O, C, V, Q, J, D, A, I, B, P, F, M, P, H, F, H, T, B, N, A, U, Q, U, P, L, H, D, H, C, N, L, F, L, N, T, R, O, P, A, W, Y, Y, R, T, K, C, G, A, J, A, J, B, E, O, V, Q, T, A, O, O, K, Q, K, G, O, M, A, J, F, C, I, D, G, U, O, M, M, V, C, Z, Z, M, R, I, P, R, H, B, F, D, K, L, I, B, C, A, W, A, U, X, W, N, T, V, C, B, G, A, G, H, E, H, C, X, H, Y, A, Y, V, W, P, X, S, X, E, G, A, L, G, J, L, B, G, Z, G, Z, B, I, Y, Z, P, V, Z, V, A, B, J, B, G, G, A, M, E, I, X, E, J, A, B, Z, R, T, Y, V, D, G, I, F, C, J, F, A, B, F, V, H, G, D, G, D, Z, W, I, T, F, K, L, E, B, L, I, F, P, C, L, J, L, B, H, B, V, M, I, U, H, N, H, F, X, D, C, I, D, O, N, I, F, I, D, F, X, K, N, U, I, E, C, E, W, T, G, A, Q, R, R, I, B, D, Z, W, M, P, T, W, F, K, H, F, T, U, E, C, D, U, H, F, L, J, D, X, M, J, Q, S, I, E, B, B, T, W, Q, Q, U, R, T, D, B, I, C, Z, M, H, K, T, I, D, Q, Q, Q, Q, Y, W, R, N, P, A, G, E, B, Y, N, G, E, K, K, H, C, A, S, O, S, J, H, L, K, I, B, L, Y, O, Q, D, L, O, G, C, F, Q, O, O, K, M, P, R, S, W, K, C, Y, N, R, F, M, P, G, B, K, H, P, R, R, O, J, O, U, X, A, X, A, E, F, P, K, J, G, L, C, I, X, X, Z, Q, L, P, R, U, S, V, R, B, C, G, P, H, H, A, M, W, Z, Q, T, Y, N, T, Y, X, Z, W, T, C, M, N, Q, F, F, M, C, X, U, W, R, V, W, Z, V, S, P, T, Z, S, K, B, Q, F, M, C, T, Y, Y, O, U, Z, S, Z, P, R, W, V, Y, C, A, D, F, Q, M, D, X, V, U, Y, Q, Z, U, W, Y, T, Y, T, W, A, G, I, B, R, D, N, K, M, V, S, Z, U, X, Q, R, U, W, T, X, B, K, E, D, Q, D, N, M, U, B, B, C, Z, A, K, B, C, K, A, O, M, V, B, A, F, T, A, E, G, A, W, E, A, F, I, A, B, I, C, L, D, C, T, E, R, B, T, C, P, Y, B, D, A, G, K, B, H, F, A, M, D, W, U, R, G, D, S, O, U, W, U, B, H, D, F, B, I, D, B, D, A, B, A, C, A, B, O, S, Q, Y, Z, B, B, I, K, B.

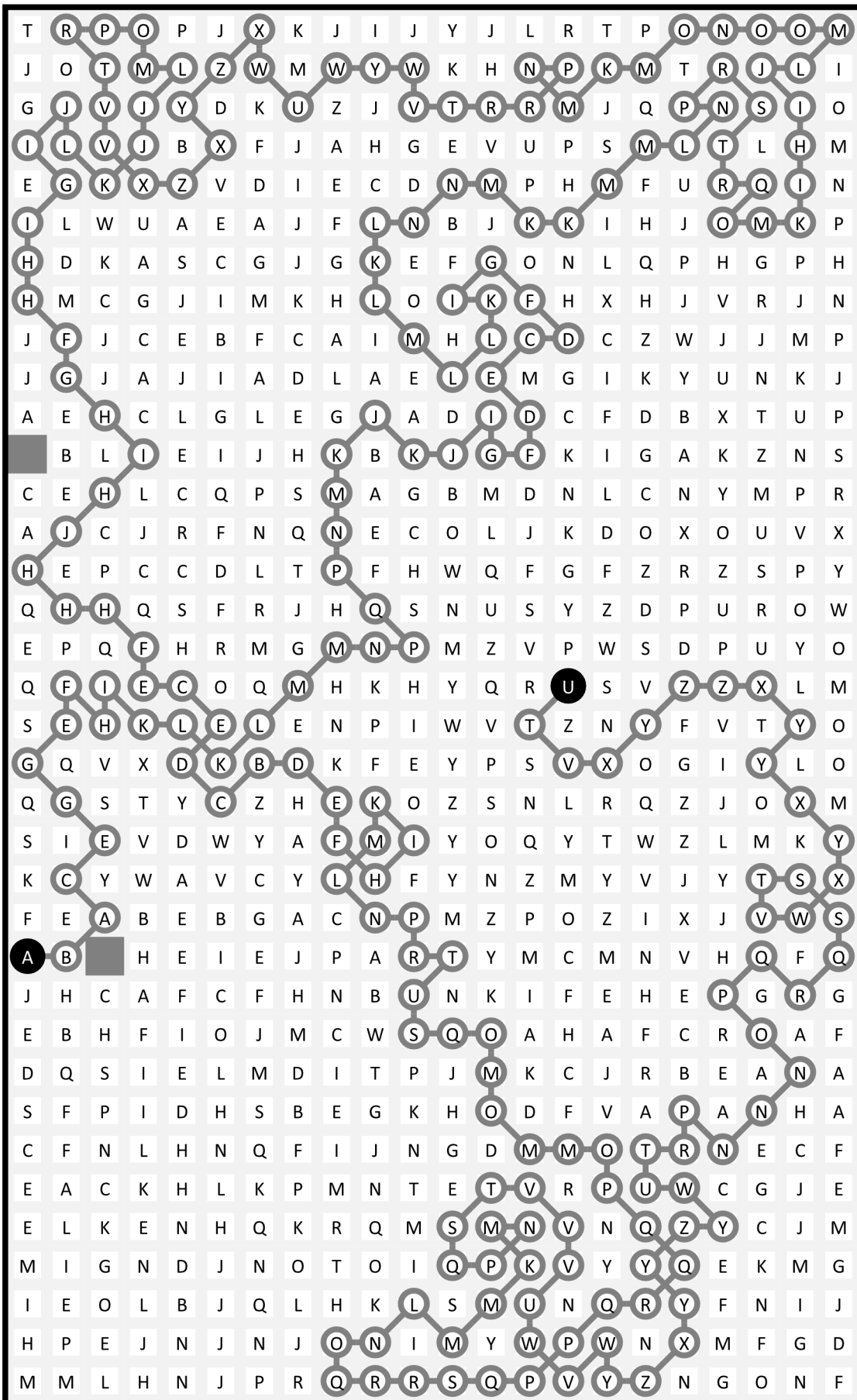
Puzzle 7



Puzzle 8



Puzzle 9



Puzzle 10

A 20x20 grid puzzle. The grid contains letters and some cells are shaded grey. A path of circles is drawn across the grid, starting from the top-left and ending at the bottom-right. The path consists of circles connected by lines, following a specific route through the grid. The letters in the grid are as follows:

V	T	W	X	Q	R	O		X	Z	R		M	P	T	U	Y	S	U		F	E
W	R	O	U	Y	O	T		V	R	V		J	O	R	W	Z	R	V		C	H
U	Q	N	U	Z	M	V	P	T	W	Y	V	X	K	M	L	Z	V	Y	A	Y	Y
V	X		V	R	Y	U	R	X	K		N	T	R		J	F	X	B	Y	F	B
H	Y	H	F	V	S	Z	S	Y		L	P	L	I	S	E	H	A	N	C	D	
G	X	V	U	D	V	P	Z	U		P	S	K	Q	K	T	D	C	L	P	F	
E	B	A	A	B	R	W	R	T	F	Q	T	V	Q	H	J	O	N	C	F	O	D
D	W	Z	T	Q	C	E	W	Y	H	E	D	R	M	O	O	E	I	H	M	I	G
D	X	U	R	F	B	T		Z	I	B		J	T	K	E	K	F	L		J	E
W	C	U		D	V	W	Y	K	Z	I	K	U	K	N		N	G	J	C	E	H
X	B	E	B	X	B	C	N	L	Z	T	W	N	P	J	O	I	L	B	L	N	D
Z	A	E	A	F	Z	W	A	Z	V	W	R	S	U	R	S	G	E	F	C	J	G
H	H	F	H	I	X	C	W	Z	O	L	M	K	L	J	E	R	U	A	F	H	L
D		E	K	B		U	S	S	M	Q	H	F		I	D	S		E	B	D	E
D	A	C	H	I	A	V	C	O	T	G	P	J	L	J	P	P	J	H	G	A	G
E	Y	E	K	F	D	A	O	A	R	H	R	O	T	O	C	M	K	M	P	D	B
H	G	X	Z	Z	C	O	H	Q	G	N	K	N	R	M	L	D	E	N	D	P	N
	J		W					G		F	M		P				F		L		
	J		U					C		N	G		L				E		D		
M	O	J	W	Y	W	S	P	E	A	B	I	K	G	J	L	J	L	I	F	B	G
R	P	K	H	F	U	N	R	T	G	D	O	L	N	I	F	H	F	K	M	A	E
L	M	Q	R	R	R	L	U	I	J	O	D	J	E	C	E	J	E	J	D	B	D
Q	J	N	W		J	T	R		M	G	L	D	R	T	U		G	J	G		G
S	P	J	O	W	X	O	P	E	F	L	I	Q	O	W	Y	P	E	D	D	E	A
P	H	S	K	P	P	W	I	C	O	M	P	G	F	Q	R	M	O	S	Q	P	C
R	I	U	Q	Y	Z	X	G	P	E	A	E	C	J	A	C	H	L	L	L	N	A
L	J	W	Q	W	Q		N	F	C	N	L	H	D	D	F	I	R		O	C	G
O	N		U	Q	X	N	R	Q	B		J	N	I		K	N	O	P	L	E	H
L	Q	I	K	N	S	P	U	C	R	Q	I	A	D	H	O	I	L	I	E	J	E
M	G	O	G	M	P	S	C	O	O	C	F	I	C	F	Q	G	C	J	O	H	D
	J	O	J	Y	Y	W	T	B	A	D	G		C	N	K	M	E	M	J	E	J
	Q	J	Y	J	H	V	C	E	G	L	J		M	B	O	I	N	C	A	A	C
S	M	L	W	V	K	L		J	H	M		K	G	A	L	L	G	Q		E	G
U	O	S	T	P	N	G	I	O	M	D	E	G	B	E	O	O	F	D	Q	K	I
O	R		H	Q	E	R	T	P	T		K	H	C		D	H	O	O	L	O	N
T	P		F	E	S	N	O	U	R		G	J	D		F	N	L	G	I	K	L

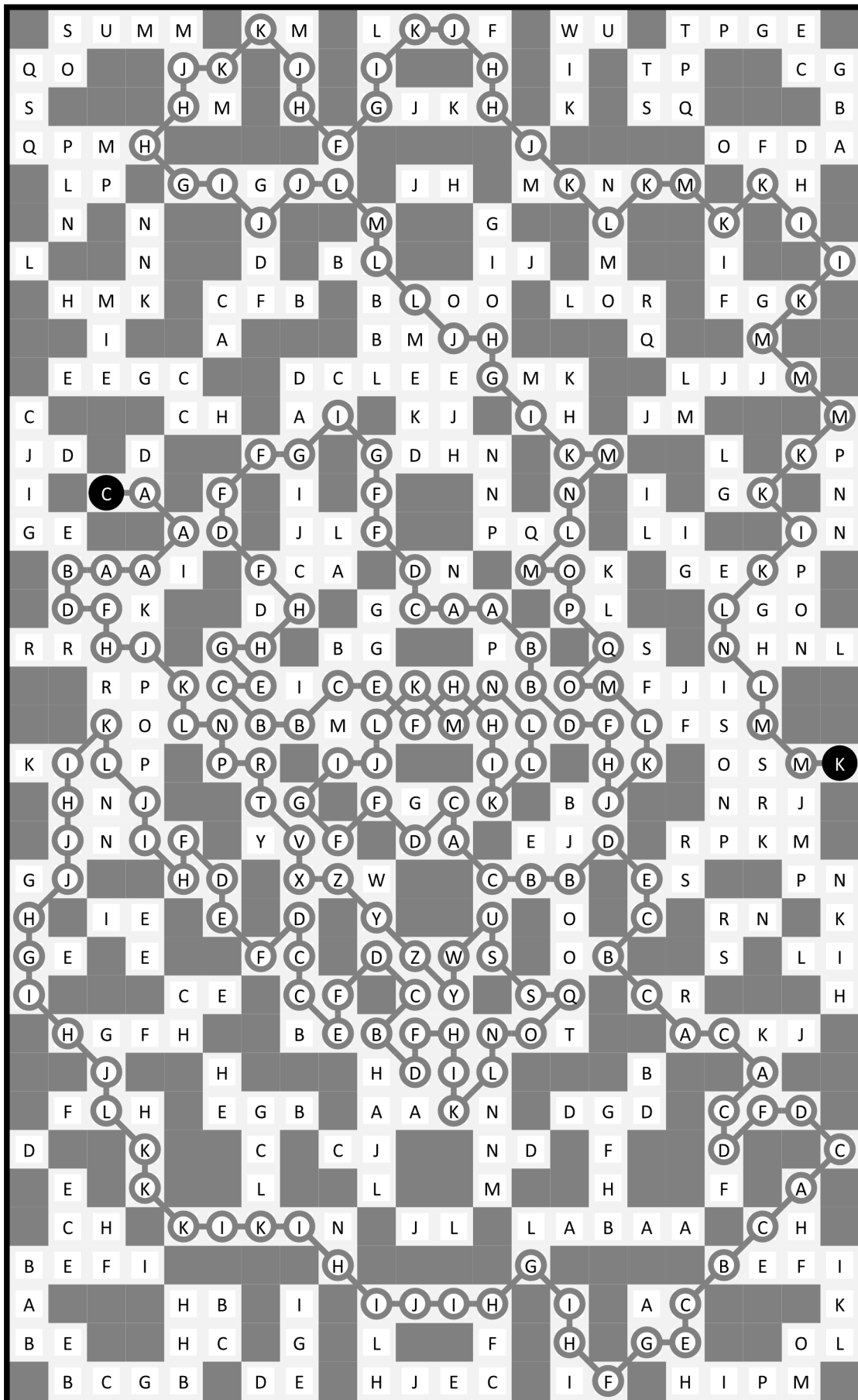
Puzzle 11

H	C	H	G	H	E	E		F	G	A	D	F	D		E	C	L	C	E	G	A	
K	J	E	D	C	B	A		J	B	G	A	A	C		F	H	J	G	A	A	D	
M	N	V	W	W	X	W		I	F	D	J	D	F		I	D	A	J	F	J	B	
P	V	Y	L	Z	S	Q		I	B	O	M	I	H		K	G	G	B	D	H	A	
R	U	N	P	Y	V	T		F	K	E	I	M	L		E	J	D	H	A	H	C	
Q	T	Q	X	N	W	R		F	C	F	K	L	I	F	H	G	L	C	H	D	E	A
M	Q	J	M	Z	Z	S		A	D	H	H	D	B		B	M	D	L	B	H	F	
O	L	D	J	M	J	H		E	K	M	O	I	A		A	D	J	I	I	M	J	
C	C	G	F	E	K		J		D	J	I	Q		A		N	M	L	O	L	H	
				I			N	L	F					B	D	L		B				
B	C	I	P	Q	R		P		H	G	E	A		N		C	D	G	A	G	B	
E	F	Q	G	T	N	P		P	K	M	B	D	G		L	A	G	M	B	G	C	
N	L	E	L	J	M	Q		T	Q	J	I	E	B		K	C	F	M	C	E	I	
K	G	I	M	E	K	S	V	R	L	O	B	H	G	J	F	D	K	J	F	A	K	
M	N	N	G	P	R	W		V	N	J	E	B	E		K	K	B	G	K	N	L	
I	I	K	Q	H	M	W		O	T	I	D	G	A		B	A	U	L	E	Q	O	
C	A	P	M	D	J	L		T	N	T	J	A	D		D	T	J	U	S	F	D	
F	D	K	N	F	N	O		J	L	R	H	A	D		S	Q	L	C	C	H	I	
H	J	C	H	K	Q	L		I	E	I	D	E	A		O	L	B	F	I	E	D	
L	A	E	J	F	R	J		G	C	A	H	H	F		Q	J	G	D	J	B	J	
I	J	D	P	Q	H	T		H	L	M	B	C	J		M	Q	L	G	A	J	B	
G	B	A	A	C	P	V		K	G	C	M	I	A		J	O	J	C	M	H	A	
J	G	P	N	J	A	R	U	J	H	B	Q	A	K	H	Q	L	H	A	F	K	B	
H	K	G	R	L	C	P		V	X	R	O	A	M		H	M	C	D	J	C	J	
N	Q	J	U	T	O	E		Z	Q	V	W	P	P		E	G	N	K	M	A	L	
O	L	S	P	Q	C		E		N	P	T	Y		Q		L	E	N	A	O	L	
				N			F	K	L					Z	X	O		C				
E	C	S	Q	O	G		I		Y	W	W	Z		V		N	P	P	J	Q	U	
G	S	D	B	J	I	C		J	S	T	T	Y	V		T	M	Y	K	O	R	T	
F	T	A	K	G	N	D		U	H	E	Q	R	U		J	K	Y	I	X	M	V	
D	V	B	H	C	C	M	Q	U	J	G	O	N	O	U	H	G	J	Y	P	Y	U	
E	I	G	D	M	N	Q		P	S	L	S	V	L		U	E	Y	N	L	L	Y	
K	Q	E	J	K	P	M		Q	N	P	T	Q	L		E	W	T	K	T	W	N	
M	O	L	A	D	B	L		L	S	W	T	J	Q		F	H	V	I	V	R	P	
L	E	K	F	A	L	O		M	P	U	X	O	K		I	K	X	J	M	S	N	
D	K	D	I	G	M	P		Q	K	R	T	N	K		Y	W	M	N	P	R	M	

Puzzle 12

A	B	A	A	D	C	J	L	L	P	N	B	N	M	N	L	J	B	K	T	W	B
F	G	I	D	A	O	N	Q	P	K	A	P	D	K	B	E	C	L	W	U	D	W
D	R	N	G	A	D	Q	J	K	F	B	M	R	C	I	F	B	K	Y	A	B	W
K	P	M	J	I	B	F	D	H	D	K	N	Y	G	J	A	F	W	J	G	V	C
L	I	G	L	G	E	K	I	O	L	U	W	N	E	B	K	E	W	I	U	H	E
H	P	S	P	U	C	H	F	D	M	T	X	L	C	J	H	Y	C	A	F	T	G
I	L	N	R	B	T	O	A	B	M	Y	T	F	N	N	F	R	Z	F	A	P	R
L	H	J	B	S	O	V	Q	O	B	Y	D	T	D	X	P	T	V	Y	P	A	C
D	F	M	C	M	F	J	V	W	Y	A	B	X	V	E	Y	Q	O	X	C	R	D
I	G	B	M	C	H	E	K	K	J	I	D	Z	F	Z	H	V	N	U	R	W	E
J	F	P	E	K	E	K	G	C	D	D	G	Y	U	G	Z	Z	X	T	Y	U	D
D	J	N	L	Q	F	P	D	K	A	J	J	I	Y	T	G	G	V	P	Y	T	F
G	Q	I	H	M	P	J	M	A	J	Y	X	L	U	W	Q	S	U	O	T	Z	D
D	G	O	M	P	L	Q	O	A	X	K	I	Z	Y	I	T	W	Q	R	C	B	Z
F	L	J	R	T	N	R	C	Y	C	Y	W	H	G	Y	T	P	V	E	T	E	A
H	I	B	C	K	Q	M	M	Z	E	G	K	J	M	Q	N	H	T	E	I	S	N
C	A	I	K	V	X	U	Y	E	Z	H	P	M	P	T	V	Q	I	G	D	A	L
D	H	A	F	G	Z	U	H	G	W	X	H	N	U	R	A	P	D	C	G	J	A
A	E	H	C	C	Y	W	X	W	D	H	K	W	Z	O	Q	A	H	I	K	G	A
G	B	A	G	Y	F	D	Z	B	J	L	E	Y	Q	N	D	L	C	L	D	G	B
B	H	I	E	Y	A	A	B	K	D	F	H	B	L	B	N	A	L	C	J	A	D
H	W	A	Z	A	D	E	E	J	A	A	A	F	C	O	D	A	E	M	E	G	A
D	H	Y	B	E	H	L	B	D	G	J	I	K	F	A	J	E	B	A	D	J	B
C	T	C	Y	W	F	I	K	A	H	M	G	C	A	G	L	A	M	H	J	E	B
A	E	R	I	G	V	C	C	L	F	L	J	H	D	M	G	J	E	K	G	N	A
D	A	Q	T	V	C	X	Q	G	K	G	E	P	F	N	J	F	R	D	L	B	E
H	A	E	P	Q	Q	Q	C	N	K	C	P	M	Q	P	J	E	O	Q	H	M	C
B	F	H	E	E	D	C	O	C	E	H	K	N	A	B	F	P	M	J	O	F	D
N	B	C	B	J	K	I	L	O	F	I	F	C	L	E	B	F	K	H	O	H	B
N	I	E	N	H	M	H	L	I	M	L	M	O	E	B	Q	A	B	A	E	P	D
L	J	F	L	F	C	H	K	N	H	D	B	L	O	G	L	O	J	D	A	J	L
I	G	K	B	A	E	H	E	F	C	L	E	E	B	N	O	H	M	L	F	D	I
J	O	C	I	M	D	B	J	L	E	H	K	H	C	Q	K	L	R	Q	J	G	K
P	J	D	M	G	I	O	M	D	M	J	F	D	I	N	S	G	I	J	O	M	E
J	O	B	J	M	E	I	L	I	G	I	B	A	A	J	N	T	M	L	R	L	I
D	D	M	K	H	F	I	N	K	L	E	H	F	E	G	R	O	J	P	N	K	G

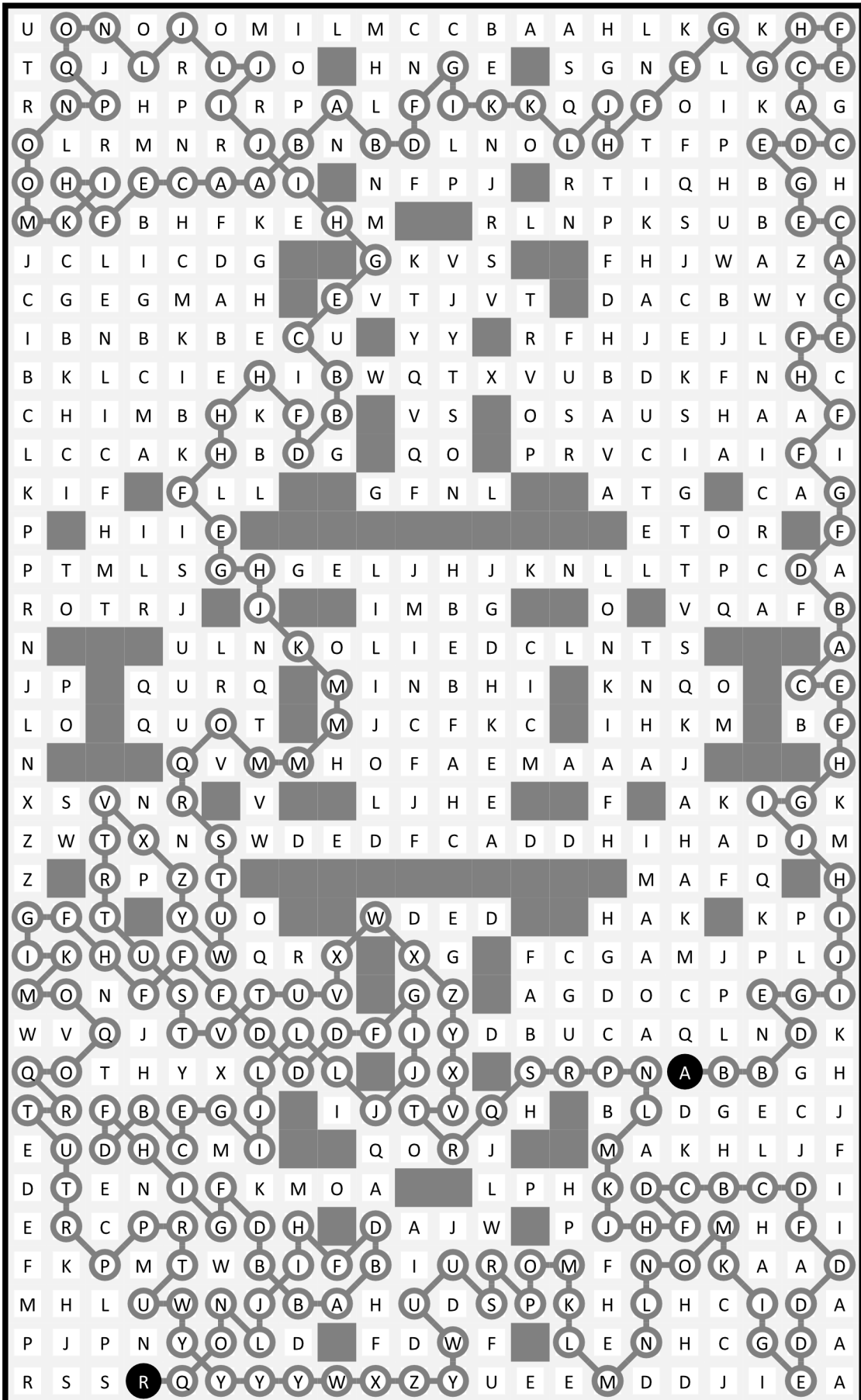
Puzzle 13



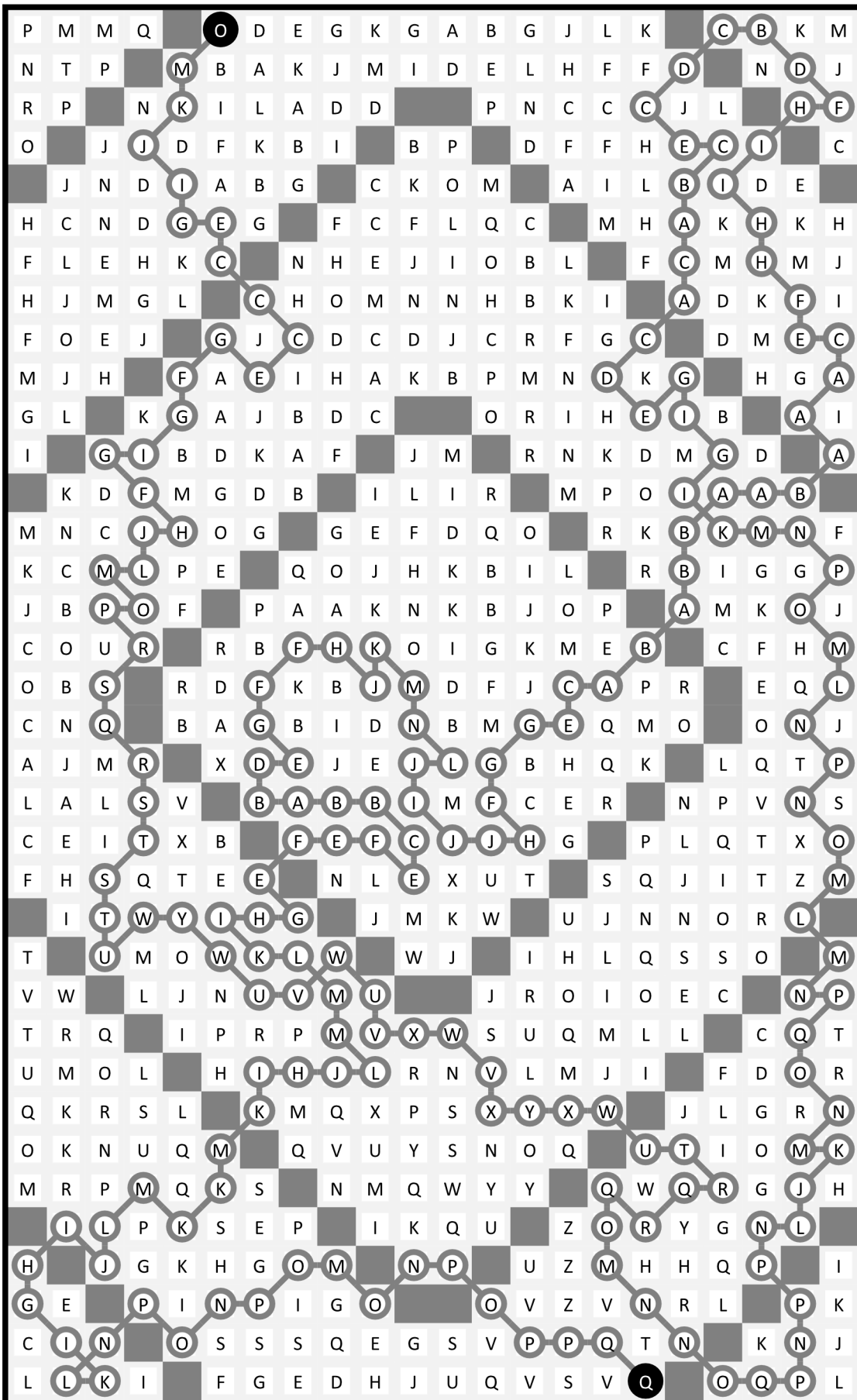
Puzzle 14

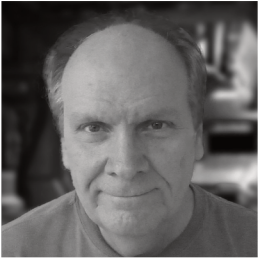
A 20x20 grid puzzle. The grid contains letters in white cells and is partially obscured by grey cells. A path of circles is drawn across the grid, starting at a black circle containing the letter 'V' at row 1, column 4 and ending at a black circle containing the letter 'V' at row 20, column 16. The path consists of 30 circles connected by a grey line. The letters in the circles, in order from top to bottom, are: V, T, R, Q, U, V, W, U, U, N, M, R, X, C, B, J, L, E, T, L, M, O, K, I, P, O, H, L, J, R, W, Q, L, I, P, S, W, Q, X, P, K, M, R, V, N, P, U, Q, U, G, P, V, T, U, I, T, N, U, R, S, R, V, S, O, E, R, T, N, R, O, P, V, R, V, O, Q, W, S, P, J, F, J, L, E, P, T, T, R, U, S, Z, W, Y, X, V, S, K, H, O, O, M, D, G, R, P, Z, X, Q, U, R, S, Y, W, I, L, M, K, E, G, U, U, T, Z, Y, U, Y, T, W, P, V, T, A, E, B, B, E, K, I, H, W, R, Q, Y, V, Z, S, S, X, R, W, D, A, G, C, K, D, M, F, J, X, U, Z, W, Z, O, Z, O, Y, Z, C, I, C, F, C, I, D, F, Y, V, S, P, T, Z, Q, T, U, W, J, E, H, A, F, G, G, E, G, X, Q, V, X, Z, R, Z, Z, I, D, I, C, L, D, I, V, T, Y, U, L, Z, P, Z, S, S, M, H, A, G, D, K, E, J, P, O, X, S, R, N, K, Y, Z, L, J, G, A, I, D, M, H, K, M, W, M, P, F, J, F, K, N, D, C, K, A, B, N, E, N, S, U, V, O, D, G, I, K, J, F, K, F, I, A, D, B, C, O, Q, W, J, H, L, M, D, L, N, O, K, N, L, G, C, T, U, E, M, F, S, F, D, J, B, Q, J, Q, L, H, K, G, P, R, H, G, L, J, G, A, B, A, A, S, U, S, U, E, I, O, L, J, D, B, J, D, E, L, B, L, N, Q, P, W, G, I, M, A, M, E, A, H, A, B, N, K, D, P, J, K, K, F, L, L, B, D, O, J, C, G, B, O, O, L, I, M, M, J, L, P, O, B, E, G, D, M, L, H, X, P, R, N, M, V, X, L, N, W, W, B, N, X, J, C, H, J, M, L, Z, K, I, J, T, U, P, R, Z, S, W, V, P, J, F, K, O, P, J, X, W, M, N, S, V, S, U, W, Y, T, N, L, Q, I, N, H, L, H, X, P, R, V, Q, Q, R, W, T, U, S, L, H, J, Q, M, Z, N, T, Y, Y, Q, S, X, Z, X, J, I, F, O, Q, M, N, X, Z, V, V, Y, R, R, Y, R, W, U, Q, M, L, J, O, J, P, V, U, Z, W, V, P, M, Y, U, T, R, U, J, O, S, L, K, M, V, R, U, O, T, S, O, Z, O, Q, S, P, O, N, Q, J, O, O, S, S, U, V, N, Q, L, N.

Puzzle 15



Puzzle 16





Born and raised in central Missouri, MK (Mike) Eidson has been writing computer programs for over 35 years, and creating puzzles, games, and mazes for even longer. Writing software to produce puzzle books was a natural evolution.

While it may be true there is nothing new under the sun, there are infinitely many angles from which to view something. Mike enjoys discovering new ways of looking at the world and sharing his findings with others who can appreciate them. Indie publishing has been such a blessing, opening doors that might otherwise have forever stood closed to him. Mike is a strong supporter of other indie publishers and creators.

Links

Eposic: <https://eposic.com>

Download page for this booklet: <https://eposic.com/pub/letter-search-mazes>

MK Eidson author site: <https://www.mkeidson.com>

Max Gumdrop musician site: <https://maxgumdrop.com>

MK Eidson digital art archive: <https://eposic.wixsite.com/ethereality>

Personal site (anything goes, and includes some of the old Eposic generators):

<http://www.trollmystic.com>

Facebook: <https://www.facebook.com/eposic>

Twitter: <https://www.twitter.com/eposic>

More links, including YouTube channels, can be found at <https://www.mkeidson.com/connect/>

Products

The Longest Survivor: A GameLit/LitRPG Novel (Head Hoppers Book 1)

- MK Eidson and Emila H Thicke
- <https://smile.amazon.com/Longest-Survivor-GameLit-LitRPG-Hoppers-ebook/dp/B08MCMFCZ6>

Enchantment Chess: A Magical Variant on the Standard Chess Game

- MK Eidson and Dave Eidson
- <https://smile.amazon.com/Enchantment-Chess-Magical-Variant-Standard/dp/1936075059>

Antiviral, electronic music album

- Max Gumdrop
- <https://maxgumdrop.hearnow.com/>

Phrase Word Search, 200 Puzzles for Teens and Adults, Large Print, Volume 1

- MK Eidson
- <https://smile.amazon.com/Phrase-Word-Search-Puzzles-Adults/dp/1936075067>

200 Number Search Mazes, Large Print

- MK Eidson
- <https://smile.amazon.com/200-Number-Search-Mazes-Eidson/dp/1936075075>

128 Letter Search Mazes for Perceptive Puzzlers

- MK Eidson
- <https://smile.amazon.com/dp/1936075083>

(Go to the next page for a *big* bonus puzzle.)

Puzzle 17

Special Mega Bonus Puzzle - 46 Rows x 36 Columns = 1656 Cells, with only 7 Cells Blocked - Uses a 7-Pt Font - Get Out the Magnifying Glass!

A	G	N	P	L	Q	S	T	S	R	Q	O	U	U	S	T	G	D	C	A	J	I	O	M	O	M	R	M	H	G	F	B	E	D	E	C
A	O	G	K	N	O	W	V	O	N	L	T	I	M	G	Q	G	L	J	M	B	L	L	D	R	Q	M	G	O	J	D	I	B	A	H	B
H	C	J	E	I	Q	G	G	U	Q	U	H	F	L	G	C	S	F	M	A	L	I	D	M	L	F	I	K	G	G	D	I	L	F	D	E
E	G	B	L	C	I	N	J	R	T	D	K	D	J	E	T	B	B	D	B	K	D	A	A	O	C	H	B	J	D	O	J	G	K	L	G
L	B	K	A	E	N	K	N	P	F	J	A	H	B	A	B	F	J	H	J	A	B	E	H	G	K	E	M	A	H	N	L	Q	E	D	G
C	N	O	K	E	H	C	I	R	F	I	A	F	D		D	I	E	N	K	G	H	F	A	D	I	C	B	M	A	E	K	I	P	B	A
L	J	E	B	D	N	G	E	P	G	D	B	M	C	A	A	A	A	L	B	J		J	I	A	E	K	H	K	C	K	N	O	H	I	J
G	C	I	F	I	B	O	O	G	L	N	M	A	M	M	K	H	O	M	I	D	D	D	F	J	C	H	K	C	H	L	I	A	D	E	L
J	F	K	N	H	O	K	K	J	P	R	K	P	C	A	A	L	F	P	I	A	A	J	L	F	C	F	C	H	L	F	C	G	T	B	K
G	I	M	P	I	M	D	C	E	M	K	O	I	L	Q	R	B	M	G	Q	L	J	A	A	A	G	I	D	J	P	N	D	V	G	E	B
Q	E	P	G	J	F	L	H	F	C	O	G	O	Q	M	T	D	L	S	D	A	D	D	I	E	A	K	C	J	Q	S	X	Y	D	W	C
F	R	C	K	B	C	E	N	K	H	J	L	J	M	T	A	C	G	D	U	D	A	G	F	B	H	F	H	K	O	T	V	P	W	F	H
Q	C	M	A	I	L	A	F	O	K	F	E	N	I	F	G	J	G	C	R	A	T	D	N	C	E	B	L	F	E	E	R	S	W	C	A
R	V	F	C	G	E	L	I	G	N	Z	B	D	O	I	L	R	I	R	E	R	C	G	F	L	J	D	A	J	N	M	G	G	D	W	G
T	P	O	H	A	L	C	Q	Y	Z	Q	R	V	N	Z	S	L	M	P	N	I	J	I	D	I	A	D	G	B	K	F	J	N	E	W	G
U	W	W	T	J	N	T	P	U	W	M	O	W	L	Q	Y	O	S	H	J	M	L	N	G	C	J	N	J	E	J	M	L	I	H	W	E
T	R	T	I	M	X	P	S	M	S	R	T	Q	U	Q	W	Q	N	M	N	P	H	Q	O	A	G	I	N	M	F	A	P	N	F	C	W
Q	O	L	I	S	W	U	O	Y	K	O	Q	Z	R	T	T	V	S	H	C	I	C	C	H	D	A	P	I	H	M	D	A	C	E	S	U
M	S	M	R	N	T	R	Y	N	W	Y	Z	W	I	Z	P	Q	U	J	G	E	J	F	A	D	A	D	K	B	L	H	F	J	Z	Y	W
N	P	H	I	O	G	Q	Y	U	O	O	Q	Y	K	Y	W	J	H	B	K	A	F		H	F	H	M	C	F	D	J	B	I	G	C	D
L	I	P	V	E	Q	X	R	Z	S	X	N	L	Y	U	S	Y	C	G	B	H	C	B	J	E	C	A	J	K	A	A	L	M	A	F	G
J	E	C	D	T	Q	N	M	O	Y	V	Z	W	L	E	R	U	A	F		E	K	K	A	G	N	L	B	C	I	F	H	D	B	R	U
L	F	A	F	N	S	P	K	W	R	U	N	U	N	B	E	B	T	D	H	B	H	A	F	B	H	J	F	H	K	C	B	G	R	W	S
H	J	J	E	H	P	L	V	M	M	S	Q	P	L	G	D	A	S	B	A	W	C	F	J	E	A	B	C	A	B	F	F	I	V	P	D
G	D	G	K	B	L	B	O	Q	G	P	E	M	D	H	N	W	U	X	Z	Z	X	M	H	M	F	J	K	J	F	C	B	B	R	V	E
H	K	D	E	G	D	H	K	N	G	C	I	B	F	L	J	X	Z	O	M	K	W	L	J	Q	L	F	M	G	M	F	P	R	C	F	V
F	J	A	I	B	F	A	L	H	E	J		F	J	B	Y	H	K	P	G	I	Z	W	N	K	O	Q	E	L	D	N	L	O	C	I	F
B		D	A	I	A	I	M	H	A	E	J	I	C	L	Y	F	R	L	N	Y	Q	X	O	Q	U	V	P	O	G	D	Q	C	I	F	K
A	J	F	C	F	M	M	J	K	C	J	F	E	H	R	L	P	I	O	K	W	U	R	R	T	P	X	U	M	J	H	R	J	B	M	H
D	C	H	C	G	D	J	D	M	D	L	H	M	J	T	U	T	V	K	W	I	S	W	H	G	D	Y	K	P	K	N	J	N	P	E	F
A	H	P	E	A	J	A	M	B	A	A	K	F	J	Q	W	P	R	S	M	S	H	G	V	M	F	P	H	N	E	D	O	C	E	N	Q
I	A	C	O	H	A	J	M	J	F	P	B	G	W	Y	O	V	N	L		K	K	V	N	Z	K	I	P	M	G	X	F	H	B	Q	M
A	K	G	E	O	L	F	F	K	P	E	F	U	T	S	V	S	T	K	N	Q	H	K	U	Z	U	H	M	F	V	T	W	I	A	L	O
A	D	B	I	O	L	O	N	H	N	T	R	Q	X	Y	V	Q	V	I	O	R	W	J	Z	W	J	V	P	L	H	S	L	X	U	B	J
B	H	K	F	C	O	S	L	Q	H	M	M	N	R	V	R	N	U	X	Y	Y	M	U	Z	J	S	N	X	K	S	J	I	S	V	C	H
C	H	A	E	J	L	L	S	T	P	H	H	Y	O	S	N	V	S	M	K	P	O	Y	J	R	M	Q	I	G	R	P	S	I	K	D	F
G	C	F	H	B	A	O	O	N	K	U	Y	I	L	O	V	Q	O	S	Q	V	W	G	P	I	L	Q	Y	O	I	N	M	N	L	H	I
H	A	J	C	R	M	A	B	J	W	M	Y	L	G	S	N	Y	Z	T	W	I	E	X	J	F	D	J	Q	Y	W	K	V	H	P	M	K
I	M	B	K	M	P	I	K	Z	X	Z	J	Z	R	I	K	P	V	X	R	G	K	C	G	L	I	R	T	U	T	T	I	S	L	I	H
K	A	D	N	P	J	A	B	A	B	J	W	Z	W	P	L	P	U	Z	K	M	P	I	N	K	F	U	P	P	M	O	U	H	T	F	D
N	M	A	K	M	G	L	G	E	D	U	I	T	Z	Y	R	N	Y	P	N	H	F	N	G	I	H	O	J	S	P	S	F	K	I	C	G
P	R	Q	A	I	J	O	I	J	H	H	V	Q	U	R	W	Y	L	K	Q	N	I	S	M	E	D	S	L	M	S	P	N	M	E	K	B
E	G	O	N	A	N	H	L	F	A	P	R	J	P	T	U	N	Z	X	L	I	Q	G	J	K	J	J	Q	O	S	B	D	B	A	B	G
B	D	G	L	J	A	L	I	D	C	M	B	A	J	E	E	U	N	J	O	G	K	O	F	E	G	M	R	T	V	K	I	F	E	I	E
A	H	L	I	N	B	I	A	F	L	C	G	E	G	H	M	J	G	F	M	J	M	R	Q	C	K	E	M	N	K	R	P	K	C	B	C
C	D	E	F	D	F	A	J	G	K	I	B	C	K	J	K	N	I	K	N	P	Q	T	O	H	J	H	G	P	R	M	O	J	H	F	E

Puzzle 17
Special Mega Bonus Puzzle Solution - 541 Cells Long - Roughly a Third of the Total Number of Cells in the Grid

The image displays a 20x20 grid puzzle solution. The grid is filled with letters, and a complex path of 541 cells is highlighted in grey. The path starts at the top-left corner (A1) and winds through the grid, visiting various letters and avoiding several blacked-out cells. The path ends at the bottom-right corner (C20). The letters along the path include: A, G, N, P, L, Q, S, T, S, R, Q, O, U, U, S, T, G, D, C, A, J, I, O, M, O, M, R, M, H, G, F, B, E, D, E, C, A, O, G, K, N, O, W, V, O, N, L, T, I, M, G, Q, G, L, J, M, B, L, L, D, R, Q, M, G, O, J, D, I, B, A, H, B, H, C, J, E, I, Q, G, G, U, Q, U, H, F, L, G, C, S, F, M, A, L, I, D, M, L, F, I, K, G, G, D, I, L, F, D, E, E, G, B, L, C, I, N, J, R, T, D, K, D, J, E, T, B, B, D, B, K, D, A, A, O, C, H, B, J, D, O, J, G, K, L, G, L, B, K, A, E, N, K, N, P, F, J, A, H, B, A, B, F, J, H, J, A, B, E, H, G, K, E, M, A, H, N, L, Q, E, D, G, C, N, O, K, E, H, C, I, R, F, I, A, F, D, D, I, E, N, K, G, H, F, A, D, I, C, B, M, A, E, K, I, P, B, A, L, J, E, B, D, N, G, E, P, G, D, B, M, C, A, A, A, A, L, B, J, J, I, A, E, K, H, K, C, K, N, O, H, I, J, G, C, I, F, I, B, O, O, G, L, N, M, A, M, M, K, H, O, M, I, D, D, D, F, J, C, H, K, C, H, L, I, A, D, E, L, J, F, K, N, H, O, K, K, J, P, R, K, P, C, A, A, L, F, P, I, A, A, J, L, F, C, F, C, H, L, F, C, G, T, B, K, G, I, M, P, I, M, D, C, E, M, K, O, I, L, Q, R, B, M, G, Q, L, J, A, A, A, G, I, D, J, P, N, D, V, G, E, B, Q, E, P, G, J, F, L, H, F, C, O, G, O, Q, M, T, D, L, S, D, A, D, D, I, E, A, K, C, J, Q, S, X, Y, D, W, C, F, R, C, K, B, C, E, N, K, H, J, L, J, M, T, A, C, G, D, U, D, A, G, F, B, H, F, H, K, O, T, V, P, W, F, H, Q, C, M, A, I, L, A, F, O, K, F, E, N, I, F, G, J, G, C, R, A, T, D, N, C, E, B, L, F, E, E, R, S, W, C, A, R, V, F, C, G, E, L, I, G, N, Z, B, D, O, I, L, R, I, R, E, R, C, G, F, L, J, D, A, J, N, M, G, G, D, W, G, T, P, O, H, A, L, C, Q, Y, Z, Q, R, V, N, Z, S, L, M, P, N, I, J, I, D, I, A, D, G, B, K, F, J, N, E, W, G, U, W, W, T, J, N, T, P, U, W, M, O, W, L, Q, Y, O, S, H, J, M, L, N, G, C, J, N, J, E, J, M, L, I, H, W, E, T, R, T, I, M, X, P, S, M, S, R, T, Q, U, Q, W, Q, N, M, N, P, H, Q, O, A, G, I, N, M, F, A, P, N, F, C, W, Q, O, L, I, S, W, U, O, Y, K, O, Q, Z, R, T, T, V, S, H, C, I, C, C, H, D, A, P, I, H, M, D, A, C, E, S, U, M, S, M, R, N, T, R, Y, N, W, Y, Z, W, I, Z, P, Q, U, J, G, E, J, F, A, D, A, D, K, B, L, H, F, J, Z, Y, W, N, P, H, I, O, G, Q, Y, U, O, O, Q, Y, K, Y, W, J, H, B, K, A, F, H, F, H, M, C, F, D, J, B, I, G, C, D, L, I, P, V, E, Q, X, R, Z, S, X, N, L, Y, U, S, Y, C, G, B, H, C, B, J, E, C, A, J, K, A, A, L, M, A, F, G, J, E, C, D, T, Q, N, M, O, Y, V, Z, W, L, E, R, U, A, F, E, K, K, A, G, N, L, B, C, I, F, H, D, B, R, U, L, F, A, F, N, S, P, K, W, R, U, N, U, N, B, E, B, T, D, H, B, H, A, F, B, H, J, F, H, K, C, B, G, R, W, S, H, J, J, E, H, P, L, V, M, M, S, Q, P, L, G, D, A, S, B, A, W, C, F, J, E, A, B, C, A, B, F, F, I, V, P, D, G, D, G, K, B, L, B, O, Q, G, P, E, M, D, H, N, W, U, X, Z, Z, X, M, H, M, F, J, K, J, F, C, B, B, R, V, E, H, K, D, E, G, D, H, K, N, G, C, I, B, F, L, J, X, Z, O, M, K, W, L, J, Q, L, F, M, G, M, F, P, R, C, F, V, F, J, A, I, B, F, A, L, H, E, J, F, J, B, Y, H, K, P, G, I, Z, W, N, K, O, Q, E, L, D, N, L, O, C, I, F, B, D, A, I, A, I, M, H, A, E, J, I, C, L, Y, F, R, L, N, Y, Q, X, O, Q, U, V, P, O, G, D, Q, C, I, F, K, A, J, F, C, F, M, M, J, K, C, J, F, E, H, R, L, P, I, O, K, W, U, R, R, T, P, X, U, M, J, H, R, J, B, M, H, D, C, H, C, G, D, J, D, M, D, L, H, M, J, T, U, T, V, K, W, I, S, W, H, G, D, Y, K, P, K, N, J, N, P, E, F, A, H, P, E, A, J, A, M, B, A, A, K, F, J, Q, W, P, R, S, M, S, H, G, V, M, F, P, H, N, E, D, O, C, E, N, Q, I, A, C, O, H, A, J, M, J, F, P, B, G, W, Y, O, V, N, L, K, K, V, N, Z, K, I, P, M, G, X, F, H, B, Q, M, A, K, G, E, O, L, F, F, K, P, E, F, U, T, S, V, S, T, K, N, Q, H, K, U, Z, U, H, M, F, V, T, W, I, A, L, O, A, D, B, I, O, L, O, N, H, N, T, R, Q, X, Y, V, Q, V, I, O, R, W, J, Z, W, J, V, P, L, H, S, L, X, U, B, J, B, H, K, F, C, O, S, L, Q, H, M, M, N, R, V, R, N, U, X, Y, Y, M, U, Z, J, S, N, X, K, S, J, I, S, V, C, H, C, H, A, E, J, L, L, S, T, P, H, H, Y, O, S, N, V, S, M, K, P, O, Y, J, R, M, Q, I, G, R, P, S, I, K, D, F, G, C, F, H, B, A, O, O, N, K, U, Y, I, L, O, V, Q, O, S, Q, V, W, G, P, I, L, Q, Y, O, I, N, M, N, L, H, I, H, A, J, C, R, M, A, B, J, W, M, Y, L, G, S, N, Y, Z, T, W, I, E, X, J, F, D, J, Q, Y, W, K, V, H, P, M, K, I, M, B, K, M, P, I, K, Z, X, Z, J, Z, R, I, K, P, V, X, R, G, K, C, G, L, I, R, T, U, T, T, I, S, L, I, H, K, A, D, N, P, J, A, B, A, B, J, W, Z, W, P, L, P, U, Z, K, M, P, I, N, K, F, U, P, P, M, O, U, H, T, F, D, N, M, A, K, M, G, L, G, E, D, U, I, T, Z, Y, R, N, Y, P, N, H, F, N, G, I, H, O, J, S, P, S, F, K, I, C, G, P, R, Q, A, I, J, O, I, J, H, H, V, Q, U, R, W, Y, L, K, Q, N, I, S, M, E, D, S, L, M, S, P, N, M, E, K, B, E, G, O, N, A, N, H, L, F, A, P, R, J, P, T, U, N, Z, X, L, I, Q, G, J, K, J, J, Q, O, S, B, D, B, A, B, G, B, D, G, L, J, A, L, I, D, C, M, B, A, J, E, E, U, N, J, O, G, K, O, F, E, G, M, R, T, V, K, I, F, E, I, E, A, H, L, I, N, B, I, A, F, L, C, G, E, G, H, M, J, G, F, M, J, M, R, Q, C, K, E, M, N, K, R, P, K, C, B, C, C, D, E, F, D, F, A, J, G, K, I, B, C, K, J, K, N, I, K, N, P, Q, T, O, H, J, H, G, P, R, M, O, J, H, F, E